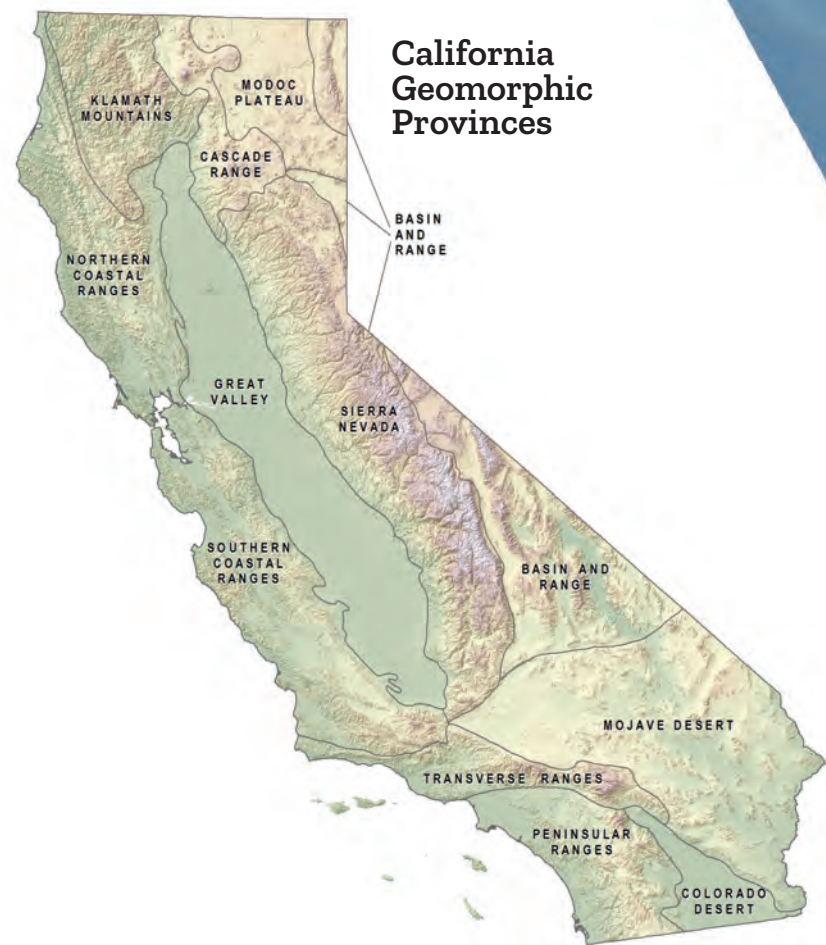
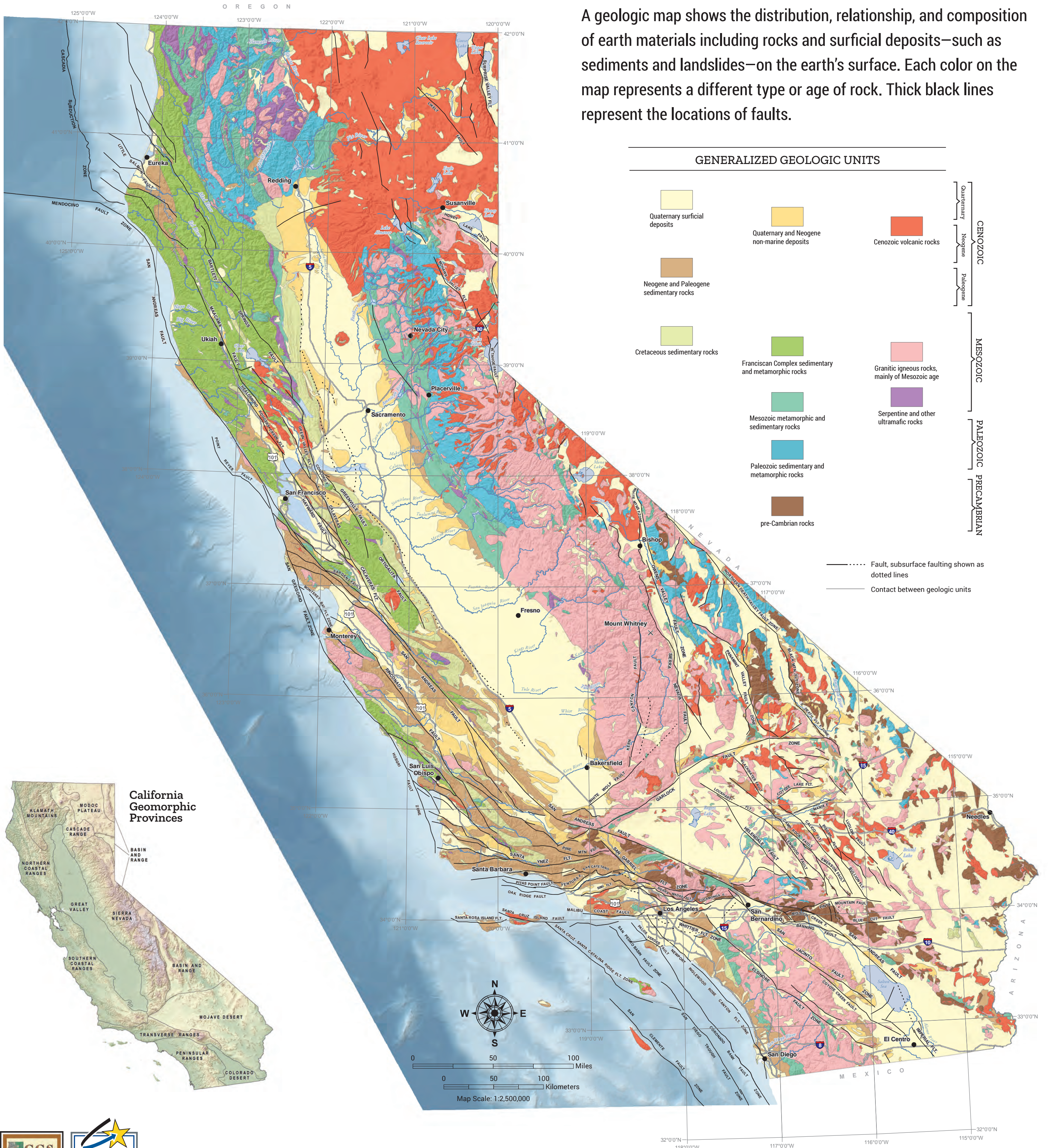


# Geology of California

A geologic map shows the distribution, relationship, and composition of earth materials including rocks and surficial deposits—such as sediments and landslides—on the earth's surface. Each color on the map represents a different type or age of rock. Thick black lines represent the locations of faults.



Copyright © 2018 by the California Department of Conservation, California Geological Survey. All rights reserved. No part of this publication may be reproduced without written consent of the California Geological Survey.  
 "The California Department of Conservation makes no warranties as to the suitability of this product for any particular purpose."