

RADON POTENTIAL ZONE MAP FOR WESTERN PLACER COUNTY, CALIFORNIA

By
JOSHUA A. GOODWIN, MATT D. O'NEAL,
and RONALD K. CHURCHILL

2020

MAP USAGE AND LIMITATIONS

This map identifies areas where geologic conditions are more likely to produce excessive indoor radon levels. The map is intended to be advisory only. It is intended to assist national, state and local governments and organizations in targeting their radon program activities and resources. This map is not intended for determining which buildings have excessive indoor radon levels. Besides geology, local variability in such factors as soil permeability, weather and climatic conditions, building design and condition, and building usage also influence indoor radon levels. Consequently, building-specific radon levels can only be determined by indoor radon testing. No warranty as to actual radon levels at specific sites is expressed or implied by this map or the accompanying report.

The U.S. Environmental Protection Agency recommends that all homes be tested for radon whatever their geographic location. Homes with elevated radon levels have been found in all zones within western Placer County. The U.S. Environmental Protection Agency recommends that action be taken to reduce radon in homes with an average annual level higher than four picocuries per liter (4 pCi/l).

Interactive Radon Map of California

The western Placer County radon potential zone information provided by this map has been included in the California Geological Survey (CGS) Interactive Radon Map of California available on-line at: <http://maps.conservation.ca.gov/cgs/radon/>

The Interactive Map allows one to identify locations of interest by entering an address or geographic name (for example, John Doe School) in the search box. If the location is in an area where CGS has completed radon mapping, a pop-up panel will appear containing radon potential information for the location, as well as links to the related CGS radon potential map and report. The pop-up window also has links to Geographic Information System (GIS) files available for download.

Additional information about radon can be found at the following websites:

California Department of Public Health, Indoor Radon Program:
<https://www.cdph.ca.gov/programs/CEH/DRSEM/Pages/EMB/Radon/Radon.aspx>

California Geological Survey-Mineral Resources Program:
<https://maps.conservation.ca.gov/cgs/radon/>

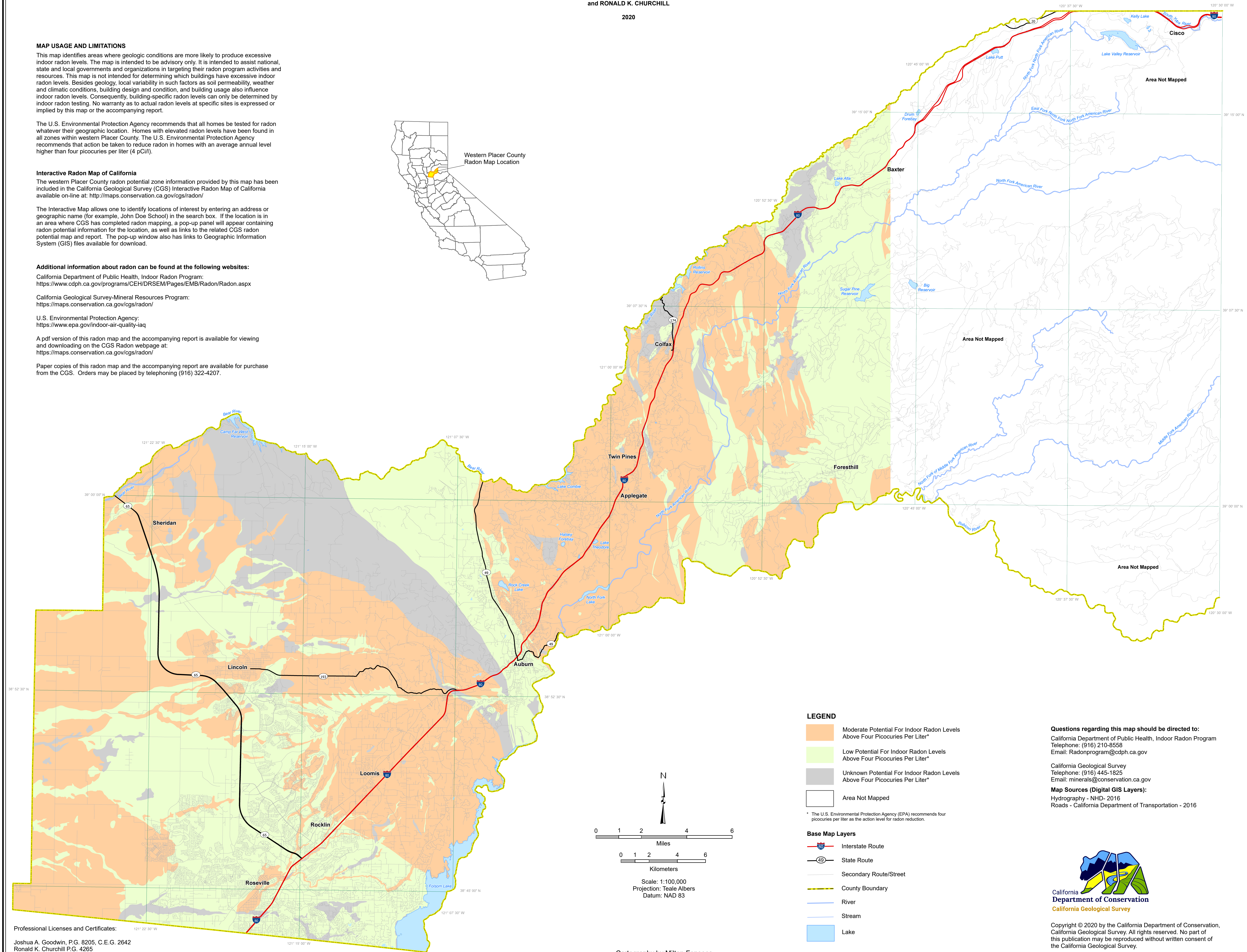
U.S. Environmental Protection Agency:
<https://www.epa.gov/indoor-air-quality-iaq>

A pdf version of this radon map and the accompanying report is available for viewing and downloading on the CGS Radon webpage at:
<https://maps.conservation.ca.gov/cgs/radon/>

Paper copies of this radon map and the accompanying report are available for purchase from the CGS. Orders may be placed by telephoning (916) 322-4207.



Western Placer County
Radon Map Location



LEGEND

- Moderate Potential For Indoor Radon Levels Above Four Picocuries Per Liter*
 - Low Potential For Indoor Radon Levels Above Four Picocuries Per Liter*
 - Unknown Potential For Indoor Radon Levels Above Four Picocuries Per Liter*
 - Area Not Mapped
- * The U.S. Environmental Protection Agency (EPA) recommends four picocuries per liter as the action level for radon reduction.

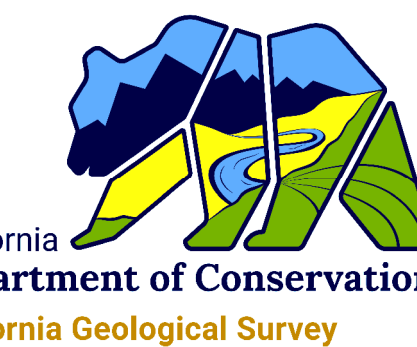
Base Map Layers

- Interstate Route
- State Route
- Secondary Route/Street
- County Boundary
- River
- Stream
- Lake

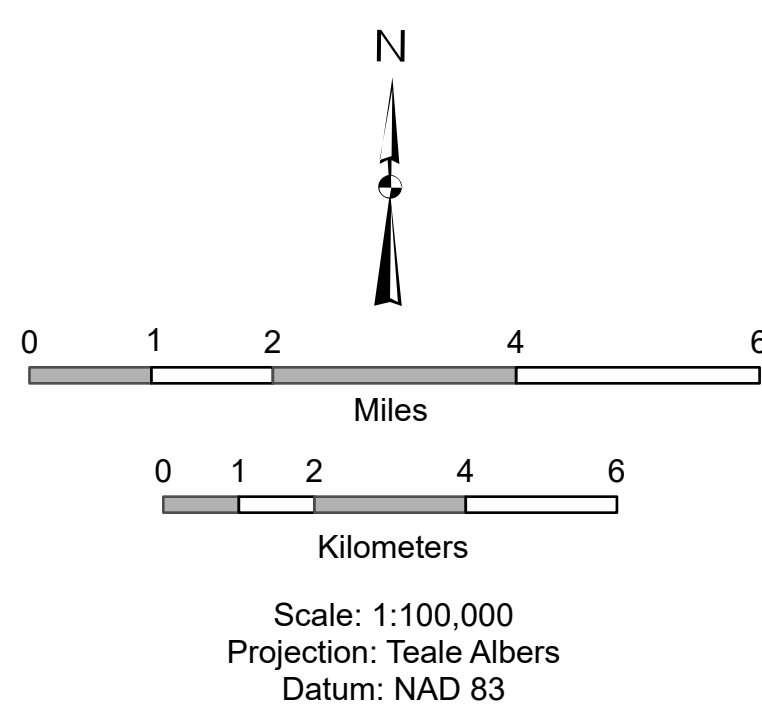
Questions regarding this map should be directed to:
California Department of Public Health, Indoor Radon Program
Telephone: (916) 210-8558
Email: Radonprogram@cdph.ca.gov

California Geological Survey
Telephone: (916) 445-1825
Email: minerals@conservation.ca.gov

Map Sources (Digital GIS Layers):
Hydrography - NHD- 2016
Roads - California Department of Transportation - 2016



Copyright © 2020 by the California Department of Conservation, California Geological Survey. All rights reserved. No part of this publication may be reproduced without written consent of the California Geological Survey.



Cartography by Milton Fonseca

Professional Licenses and Certificates:
Joshua A. Goodwin, P.G. 8205, C.E.G. 2642
Ronald K. Churchill P.G. 4265