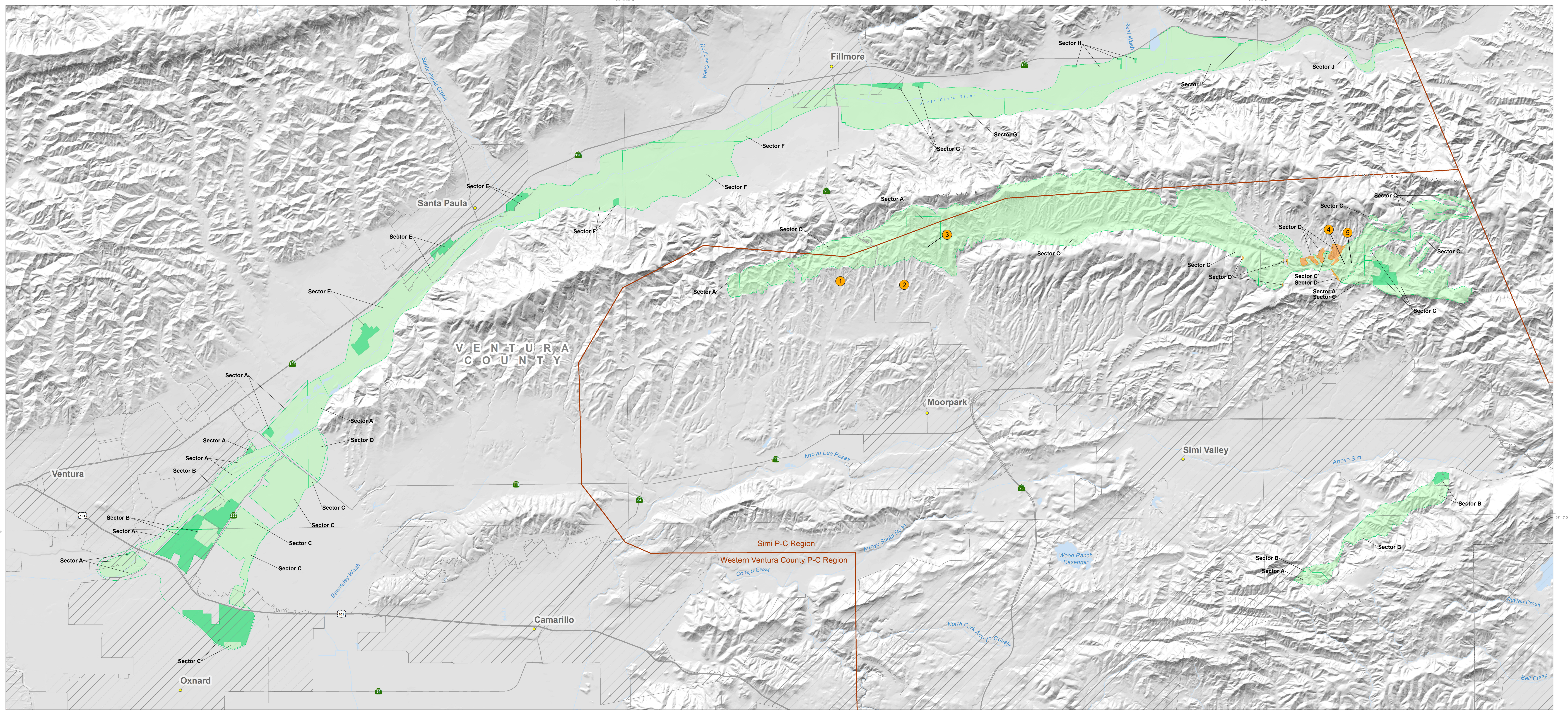


California Geological Survey

Sector Map for Portland Cement Concrete Aggregate in the Western Ventura County and Simi Production-Consumption Regions

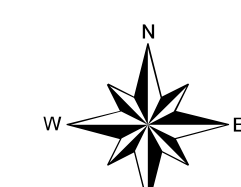
By Greg D. Marquis

2022

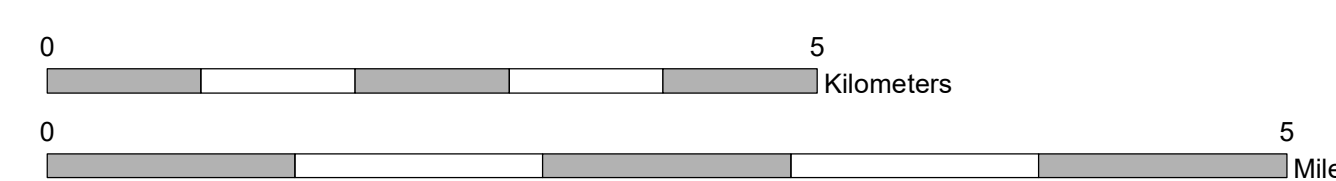


- Sector containing regionally significant construction aggregate resources
- New sector
- Sector depleted by mining, lost to incompatible land uses, or determined to no longer be significant upon re-evaluation
- Mine Location and Reference No.

- Simi Production-Consumption Region
- Western Ventura County Production-Consumption Region
- County
- City
- Water
- Road



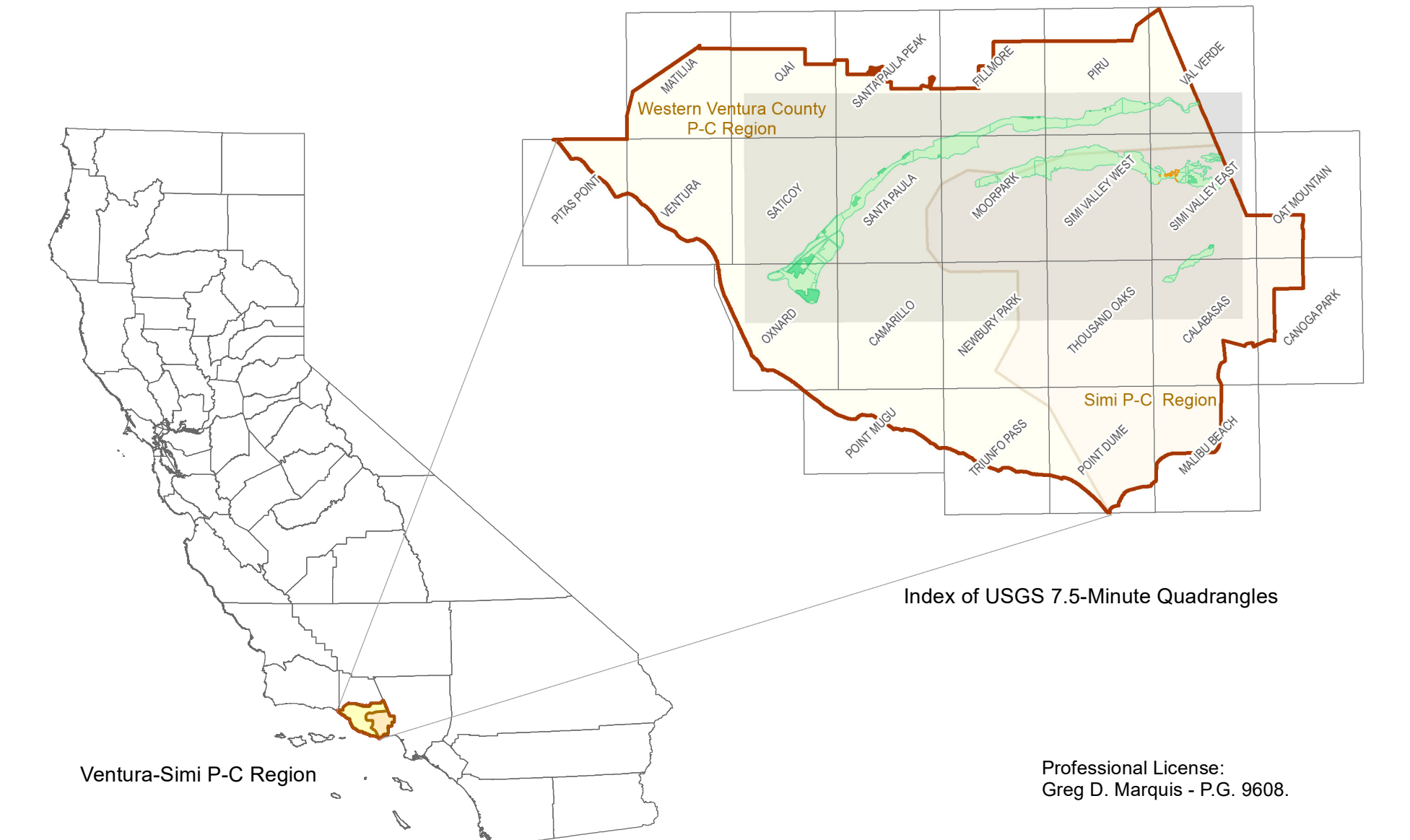
Projection: Teale Albers (meters)
 Datum: NAD 83
 Map scale 1:48,000



No.	Mine ID	Mine	Operator
1	91-56-0032	Grimes Rock	Grimes Rock, Inc.
2	91-56-0028	Wayne J.	Wayne J. Sand & Gravel, Inc.
3	91-56-0014	Moorpark Mine	CEMEX Construction Materials, LP
4	91-56-0021	Tapo Canyon Mine	Gillbrand Industrial Sands, Inc.
5	91-56-0015	Tapo Rock and Sand	Tapo Rock and Sand, Inc.



Date: 7/11/2022



Professional License:
 Greg D. Marquis - P.G. 9608.
 GIS Design and Map Layout by Janine Bird.

Web Accessibility Statement. We could not make this map fully accessible with assistive technology. To request alternative means of access, please visit our Accessibility web page at <https://www.conservation.ca.gov>. To help us respond to your concern, please include in your request: the title of the map, the web address where you obtained it, and your contact information.



Copyright 2022 by the California Department of Conservation, California Geological Survey. All rights reserved. No part of this publication may be reproduced without written consent of the California Geological Survey.
 The California Department of Conservation makes no warranties as to the suitability of this product for any particular purpose.
www.conservation.ca.gov/cgs

Base Map Sources: Hydrography: National Hydrography Dataset; U.S. Geological Survey; Roads: California Department of Transportation (CalTrans).