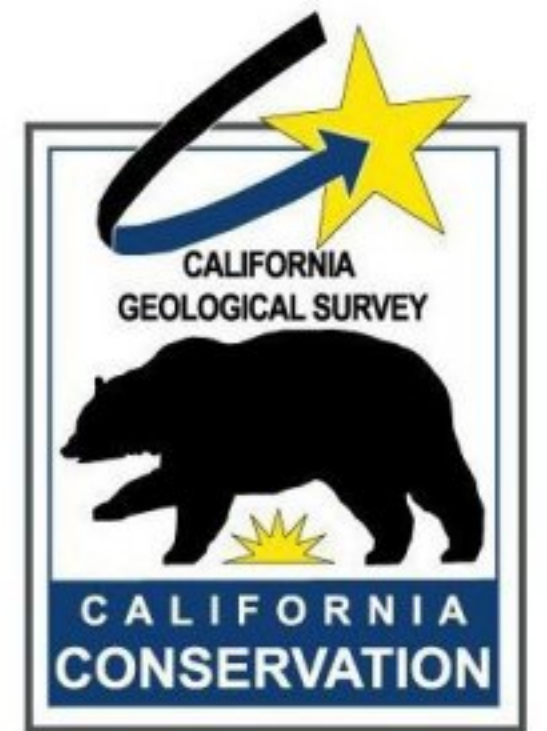
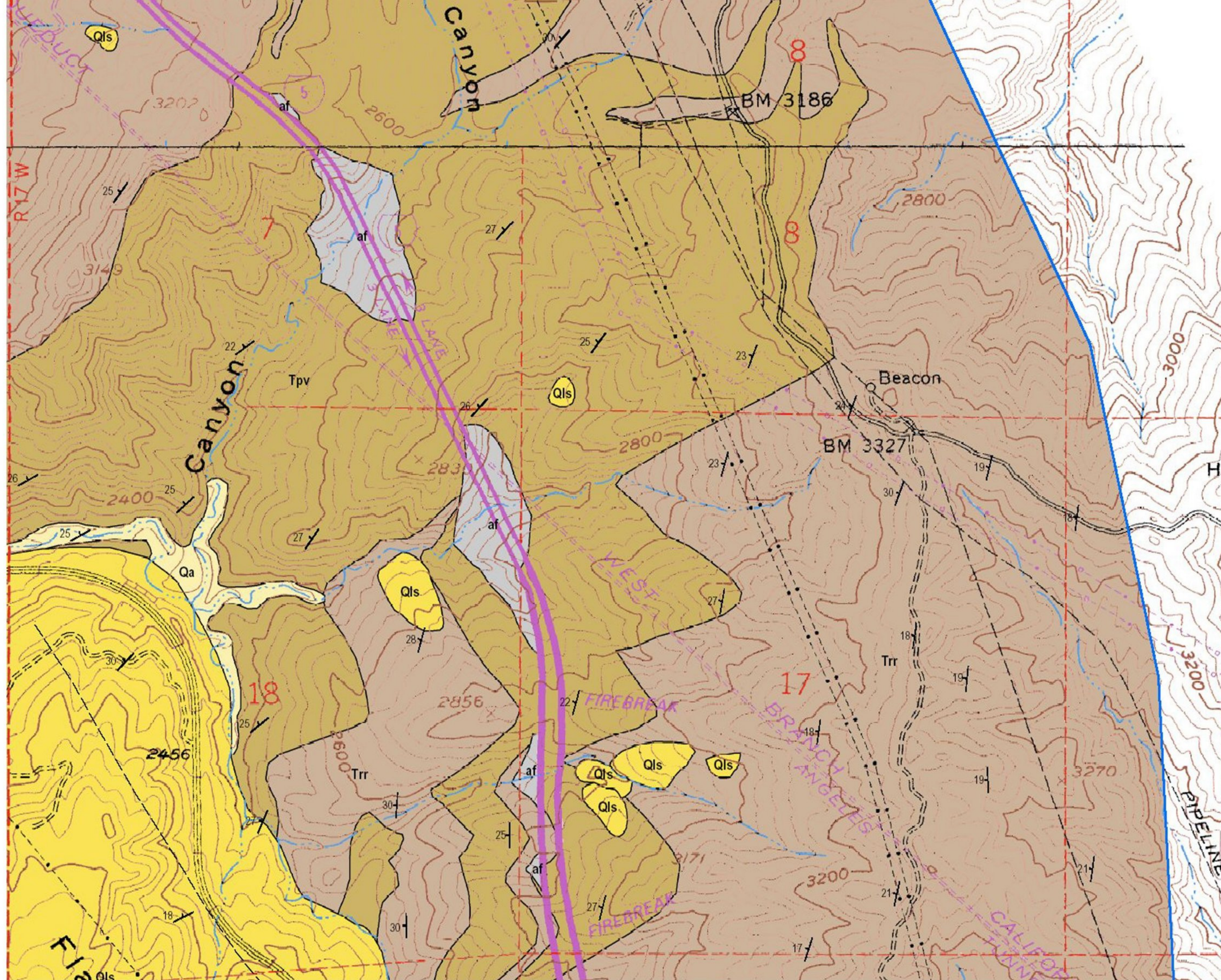
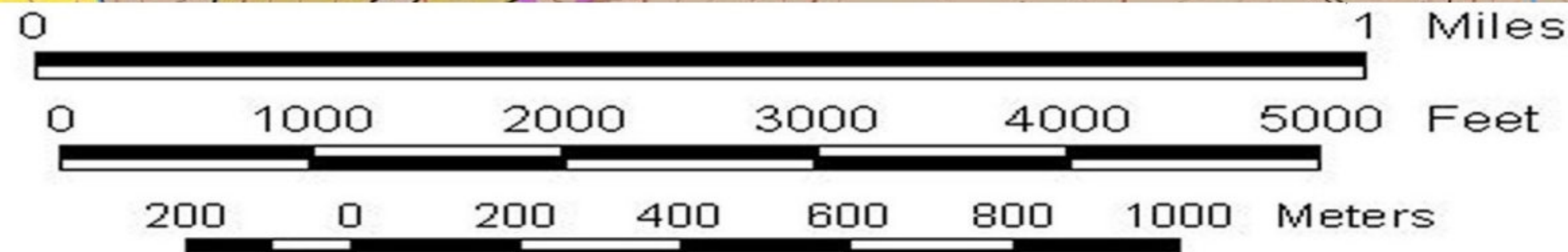


Geologic Map of the Highway 5 corridor Los Angeles County, California



topographic base map from USGS Whitaker Peak quadrangle



LANDSLIDES IN THE INTERSTATE 5 CORRIDOR BETWEEN VALENCIA AND GORMAN, LOS ANGELES COUNTY, CALIFORNIA
 by B.D. Foster
 Plate 1, Map 8 of 14