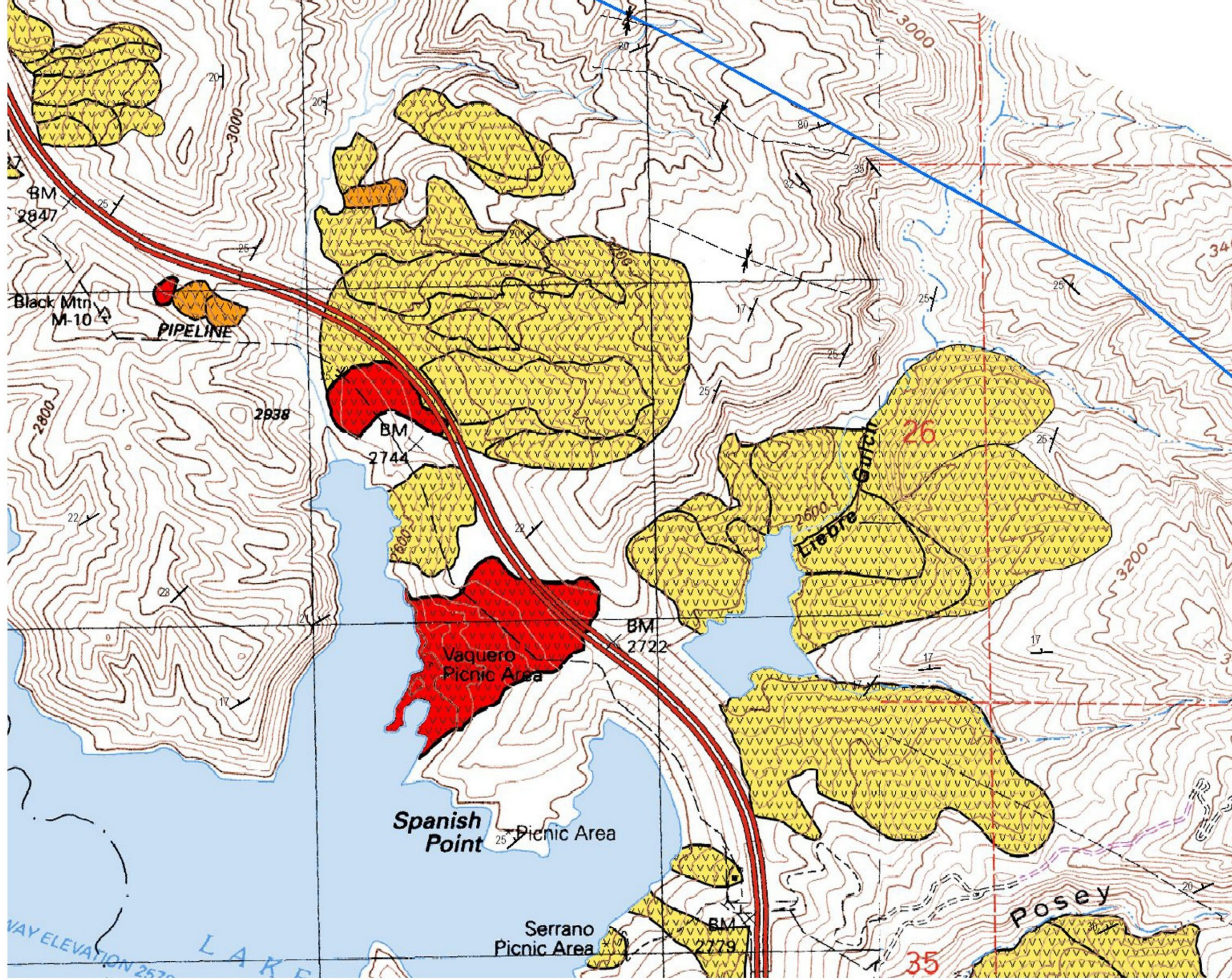


Landslide Map of the Highway 5 corridor Los Angeles County, California



topographic base map from USGS Liebre Mtn and Black Mtn quadrangles



LANDSLIDES IN THE INTERSTATE 5 CORRIDOR BETWEEN VALENCIA AND GORMAN, LOS ANGELES COUNTY, CALIFORNIA
by B.D. Foster
Plate 1, Map 11 of 14