

WILLITS

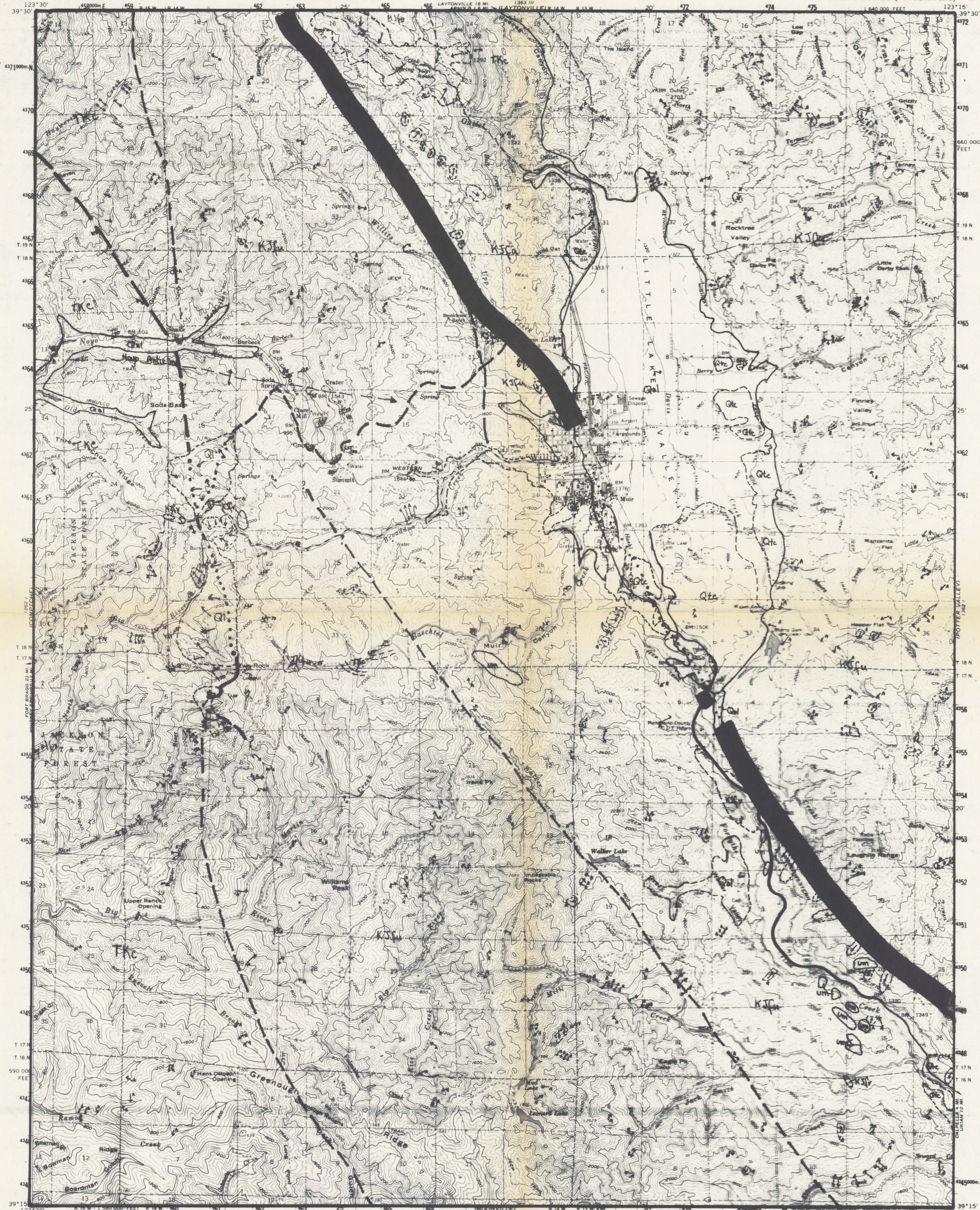
STATE OF CALIFORNIA
THE RESOURCES AGENCY
DEPARTMENT OF FORESTRY
REGION 1 GEOLOGY GROUP

GEOLOGIC MAP
WILLITS
QUADRANGLE
Compiled by: J.D. Durham Date: 4-79
Approved: H.E. Hoffman, COMR

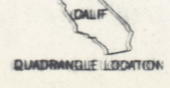
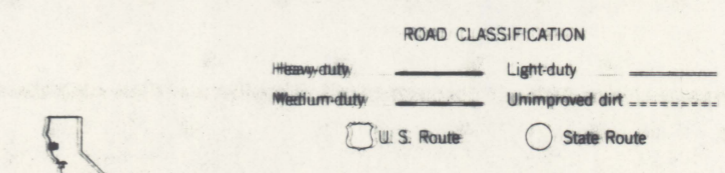
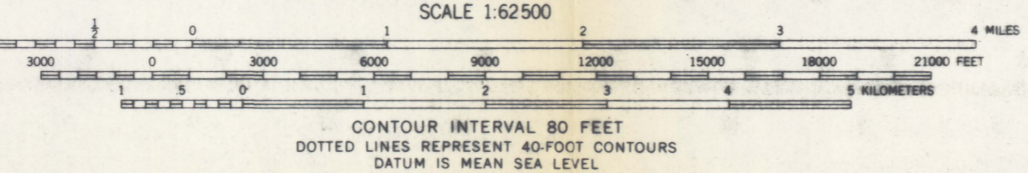
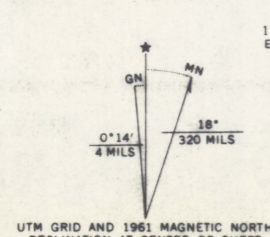
UNITED STATES
DEPARTMENT OF THE INTERIOR
GEOLOGICAL SURVEY

STATE OF CALIFORNIA
DEPARTMENT OF WATER RESOURCES

WILLITS QUADRANGLE
CALIFORNIA-MENDOCINO CO.
15 MINUTE SERIES (TOPOGRAPHIC)



Mapped, edited, and published by the Geological Survey
Control by USGS, USC&GS, and USCE
Topography by photogrammetric methods from aerial
photographs taken 1957. Field checked 1961.
Polyconic projection. 1927 North American datum.
10,000-foot grid based on California coordinate system, zone 2
1000-meter Universal Transverse Mercator grid ticks,
zone 10, shown in blue.
Red tint indicates area in which only landmark buildings are shown



THIS MAP COMPLIES WITH NATIONAL MAP ACCURACY STANDARDS
FOR SALE BY U.S. GEOLOGICAL SURVEY, DENVER, COLORADO 80225 OR WASHINGTON, D. C. 20242
A FOLDER DESCRIBING TOPOGRAPHIC MAPS AND SYMBOLS IS AVAILABLE ON REQUEST

WILLITS, CALIF.
N3915-W12315/15
1961
AMS 1382 IV-SERIES V795

SPECIAL PRINTING
Contours and woodland symbols omitted