

UNITED STATES
DEPARTMENT OF THE INTERIOR
GEOLOGICAL SURVEY

STATE OF CALIFORNIA
EARL WARREN, GOVERNOR
FRANK B. DURKEE, DIRECTOR OF PUBLIC WORKS
A. D. EDMONSTON, STATE ENGINEER
(HOOPA) WEITCHPEC 17 MI. HOOPA 2.7 MI. R. 5 E.

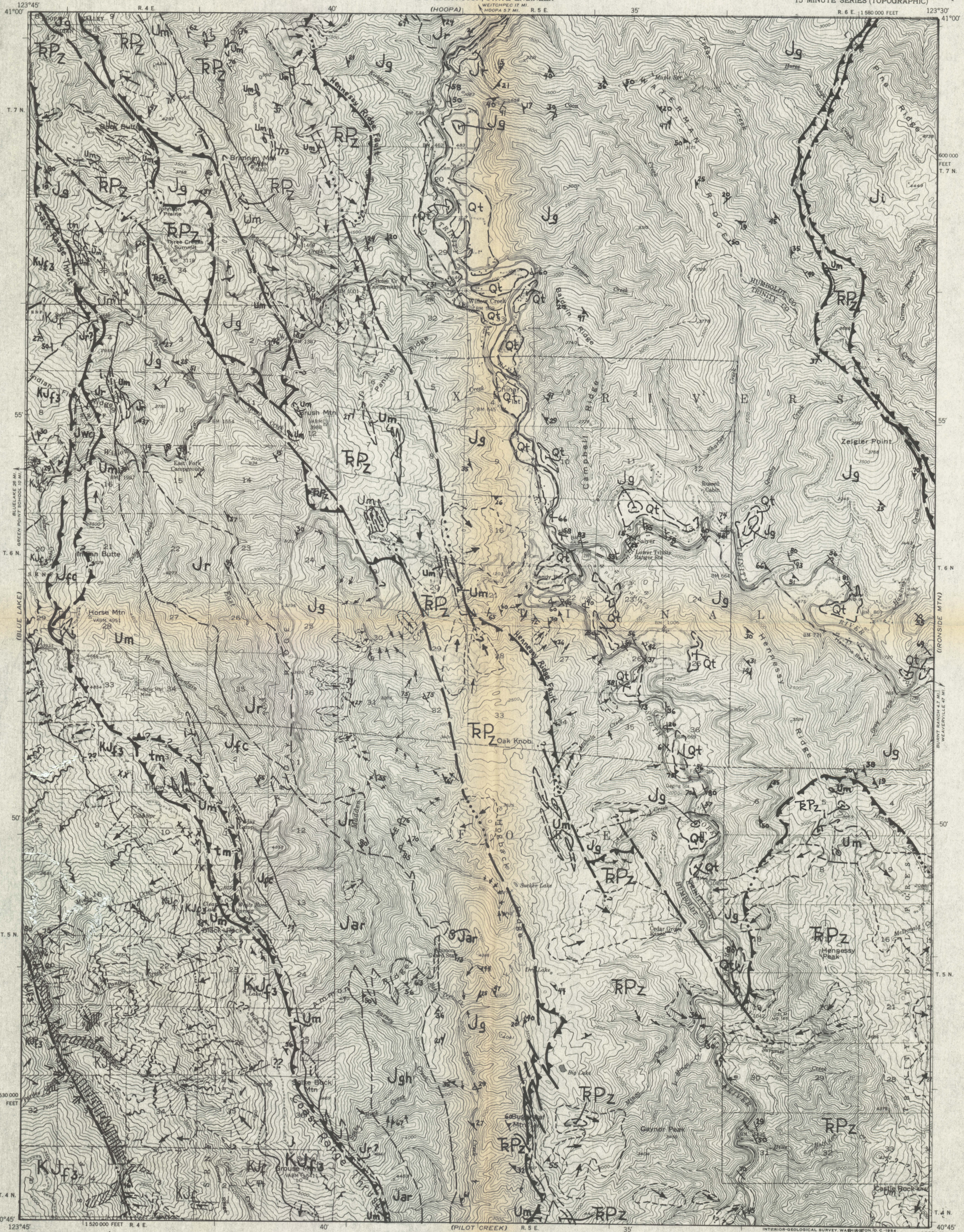
STATE OF CALIFORNIA
THE RESOURCES AGENCY
DEPARTMENT OF FORESTRY
REGION 1 GEOLOGY GROUP



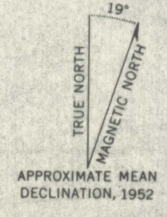
GEOLOGIC MAP
WILLOW CREEK
QUADRANGLE
Compiled by: Donn Ristau Date: 4/79
Approved: H. E. Huffman CDMG

WILLOW CREEK QUADRANGLE
CALIFORNIA
15 MINUTE SERIES (TOPOGRAPHIC)

(SAWYERS BAR)
1:25,000



Mapped, edited, and published by the Geological Survey
Control by USGS and USC&GS
Topography from aerial photographs by multiplex methods
Aerial photographs taken 1947. Field check 1952
Polyconic projection, 1927 North American datum
10,000-foot grid based on California coordinate system, zone 1
Dashed land lines indicate approximate locations
Certain land lines omitted because of insufficient data
All recovered corners are shown
Unchecked elevations are shown in brown



Scale 1 in. = 62,500 in.

CONTOUR INTERVAL 100 FEET
DATUM IS MEAN SEA LEVEL

ROAD CLASSIFICATION
Heavy-duty ——— 4 LANE 6 LANE Light-duty ———
Medium-duty ——— 4 LANE 6 LANE Unimproved dirt ———
U.S. Route State Route



WILLOW CREEK, CALIF.
N4045-W12330/15
1952

THIS MAP COMPLIES WITH NATIONAL MAP ACCURACY STANDARDS
FOR SALE BY U. S. GEOLOGICAL SURVEY, FEDERAL CENTER, DENVER, COLORADO OR WASHINGTON 25, D. C.
A FOLDER DESCRIBING TOPOGRAPHIC MAPS AND SYMBOLS IS AVAILABLE ON REQUEST