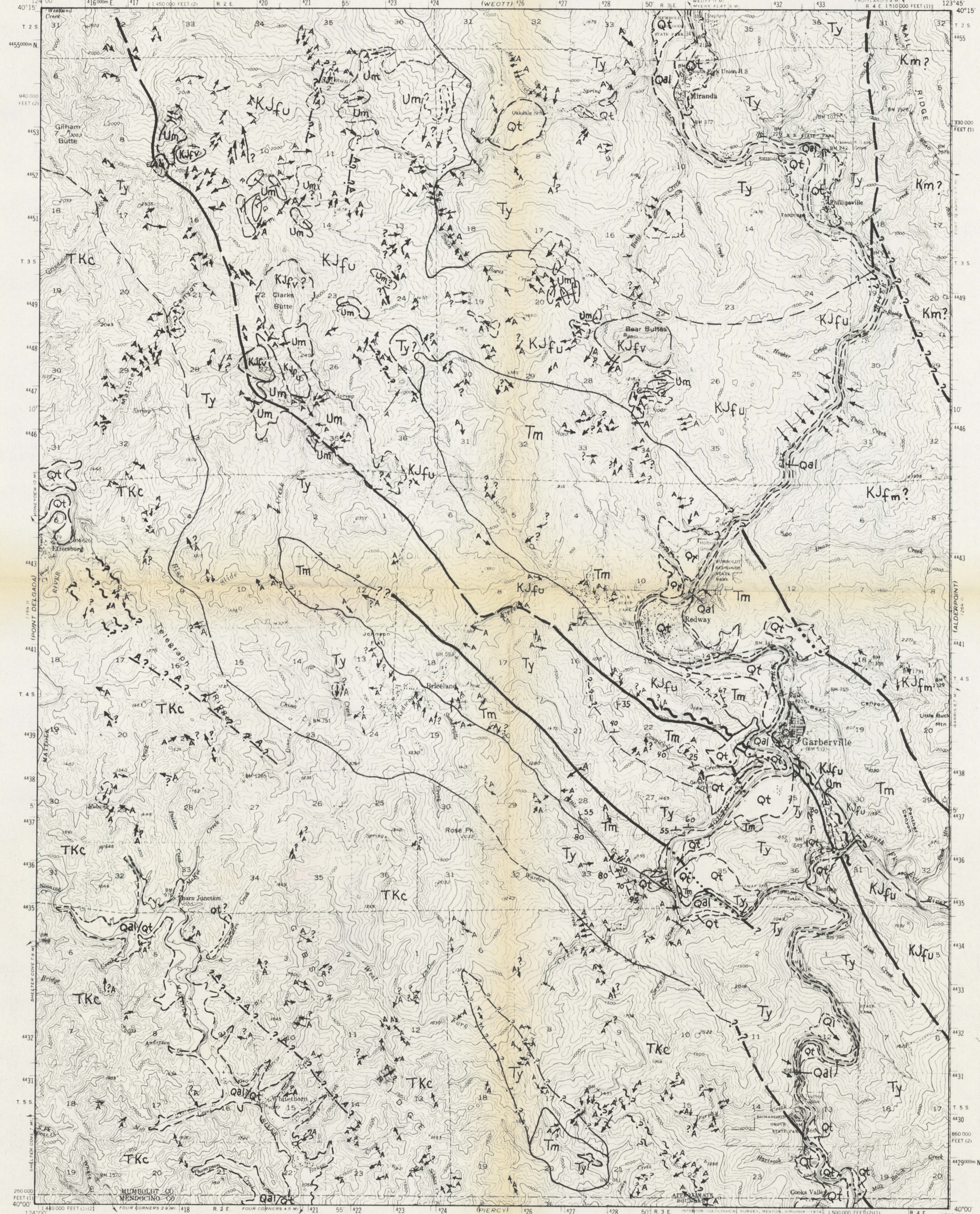


UNITED STATES DEPARTMENT OF THE INTERIOR GEOLOGICAL SURVEY  
UNITED STATES DEPARTMENT OF THE ARMY CORPS OF ENGINEERS  
STATE OF CALIFORNIA DEPARTMENT OF WATER RESOURCES  
GARBERVILLE QUADRANGLE CALIFORNIA 15 MINUTE SERIES (TOPOGRAPHIC)



Map by the Army Map Service  
Field inspected, edited, and published by the Geological Survey  
Control by USGS, USC&GS, and US Army  
Topography from aerial photographs by multiplex methods  
Aerial photographs taken 1941-1942. Field check 1949  
Polyconic projection. 1927 North American datum  
10,000-foot grid based on California coordinate system,  
zones 1 and 2  
Dashed land lines indicate approximate location  
1000-meter Universal Transverse Mercator grid ticks,  
zone 10, shown in blue

SCALE 1:62,500

ROAD CLASSIFICATION  
Medium duty — Light duty  
Unimproved dirt  
U.S. Route

CONTOUR INTERVAL 100 FEET  
NATIONAL GEODETIC VERTICAL DATUM OF 1929

GARBERVILLE, CALIF.  
N4000-W12345/15

1949  
AMS 1264 III-SERIES V795