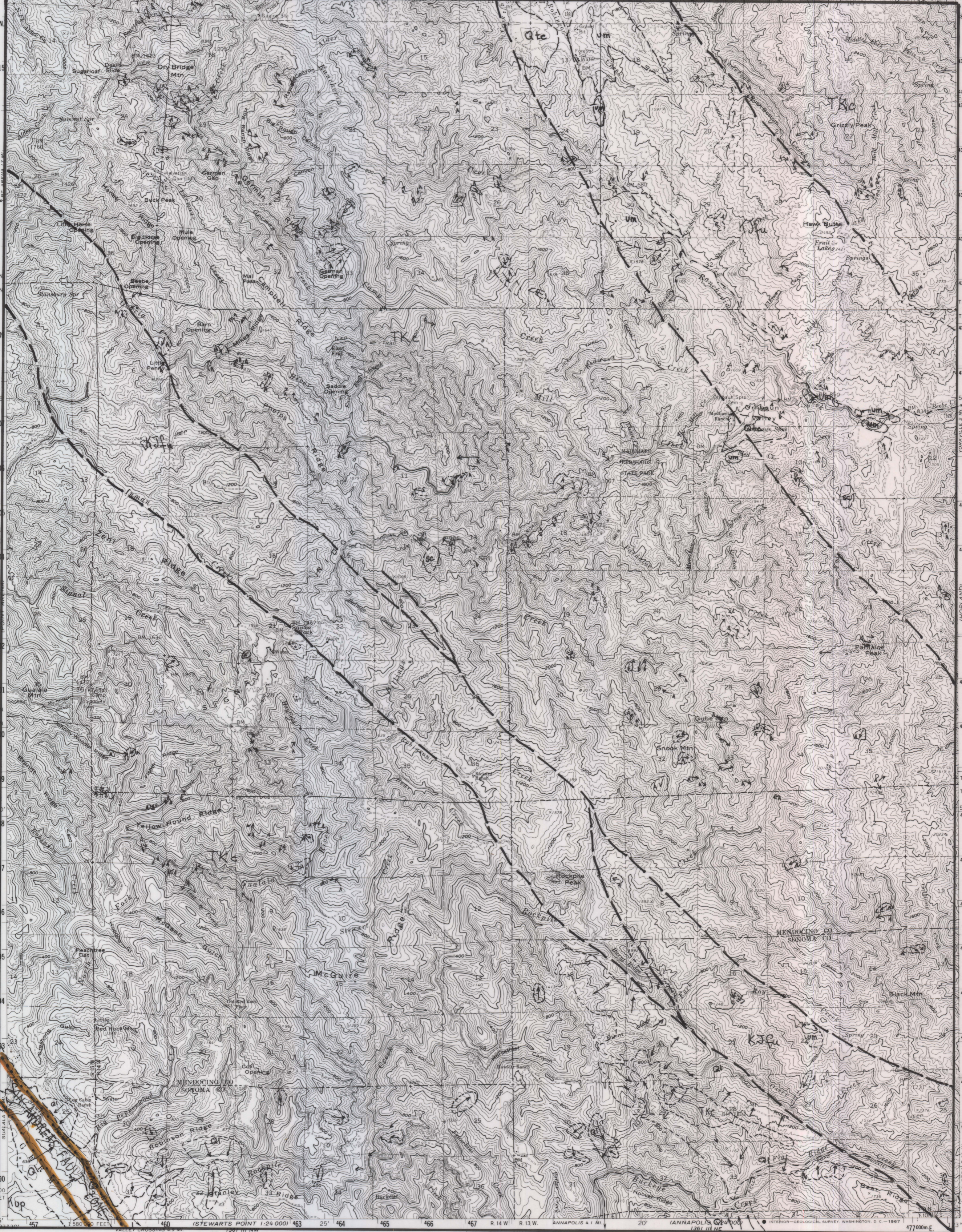


UNITED STATES
 DEPARTMENT OF THE INTERIOR
 GEOLOGICAL SURVEY

STATE OF CALIFORNIA
 DEPARTMENT OF WATER RESOURCES

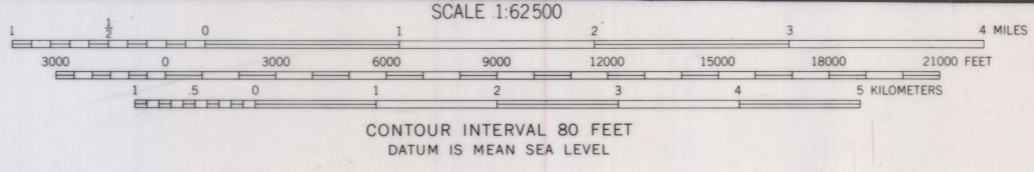
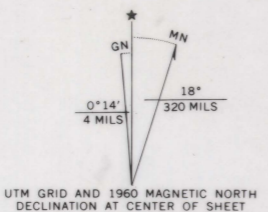
ORNBAUN VALLEY QUADRANGLE
 CALIFORNIA
 15 MINUTE SERIES (TOPOGRAPHIC)

123° 30' 45.7000" E 458 459 R 15 W R 14 W BOONVILLE 4.9 MI 25' 464 465 466 1362 III (BOONVILLE) 468 R 14 W NAVARRO 16 MI BOONVILLE 0.9 MI 20' R 13 W UKIAH 17 MI 473 474 475 476 11640 000 FEET 123° 15' 39" 00"



this fault has not been mapped on adjacent quad.

Mapped, edited, and published by the Geological Survey
 Control by USGS, USC&GS, and USCE
 Topography by photogrammetric methods from aerial photographs taken 1957. Field checked 1960
 Polyconic projection. 1927 North American datum
 10,000-foot grid based on California coordinate system, zone 2
 1000-meter Universal Transverse Mercator grid ticks, zone 10, shown in blue



ROAD CLASSIFICATION

| | |
|-----------------|-------------|
| Medium-duty | Light-duty |
| Unimproved dirt | State Route |



ORNBAUN VALLEY, CALIF.
 N3845-W12315/15

SPECIAL PRINTING
 Contours and woodland symbols omitted