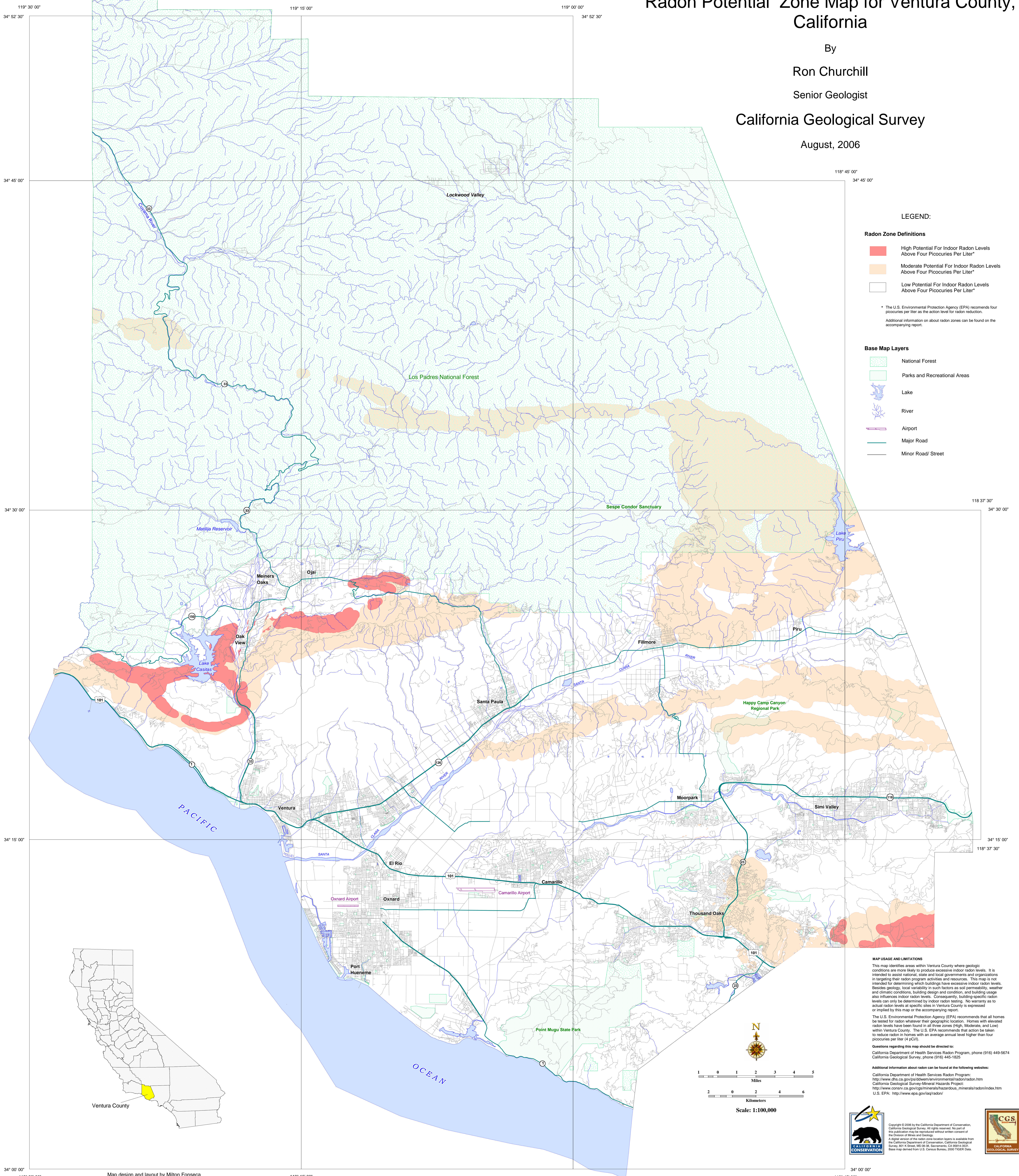


# Radon Potential Zone Map for Ventura County, California

By  
**Ron Churchill**  
Senior Geologist

California Geological Survey

August, 2006



### LEGEND:

- #### Radon Zone Definitions
- High Potential For Indoor Radon Levels Above Four Picouries Per Liter\*
  - Moderate Potential For Indoor Radon Levels Above Four Picouries Per Liter\*
  - Low Potential For Indoor Radon Levels Above Four Picouries Per Liter\*

\* The U.S. Environmental Protection Agency (EPA) recommends four picocuries per liter as the action level for radon reduction.  
Additional information on about radon zones can be found on the accompanying report.

- #### Base Map Layers
- National Forest
  - Parks and Recreational Areas
  - Lake
  - River
  - Airport
  - Major Road
  - Minor Road/ Street

#### MAP USAGE AND LIMITATIONS

This map identifies areas within Ventura County where geologic conditions are more likely to produce excessive indoor radon levels. It is intended to assist national, state and local governments and organizations in targeting their radon program activities and resources. This map is not intended for determining which buildings have excessive indoor radon levels. Besides geology, local variability in such factors as soil permeability, weather and climatic conditions, building design and condition, and building usage also influences indoor radon levels. Consequently, building-specific radon levels can only be determined by indoor radon testing. No warranty as to actual radon levels at specific sites in Ventura County is expressed or implied by this map or the accompanying report.

The U.S. Environmental Protection Agency (EPA) recommends that all homes be tested for radon whatever their geographic location. Homes with elevated radon levels have been found in all three zones (High, Moderate, and Low) within Ventura County. The U.S. EPA recommends that action be taken to reduce radon in homes with an average annual level higher than four picocuries per liter (4 pCi/L).

Questions regarding this map should be directed to:  
California Department of Health Services Radon Program; phone (916) 449-5674  
California Geological Survey; phone (916) 445-1625

Additional information about radon can be found at the following websites:  
California Department of Health Services Radon Program:  
<http://www.dhs.ca.gov/dwpe/environmental/radon.htm>  
California Geological Survey - Mineral Hazards Project:  
[http://www.consrv.ca.gov/leg/minerals/hazardous\\_minerals/radon/index.htm](http://www.consrv.ca.gov/leg/minerals/hazardous_minerals/radon/index.htm)  
U.S. EPA: <http://www.epa.gov/radon/>

