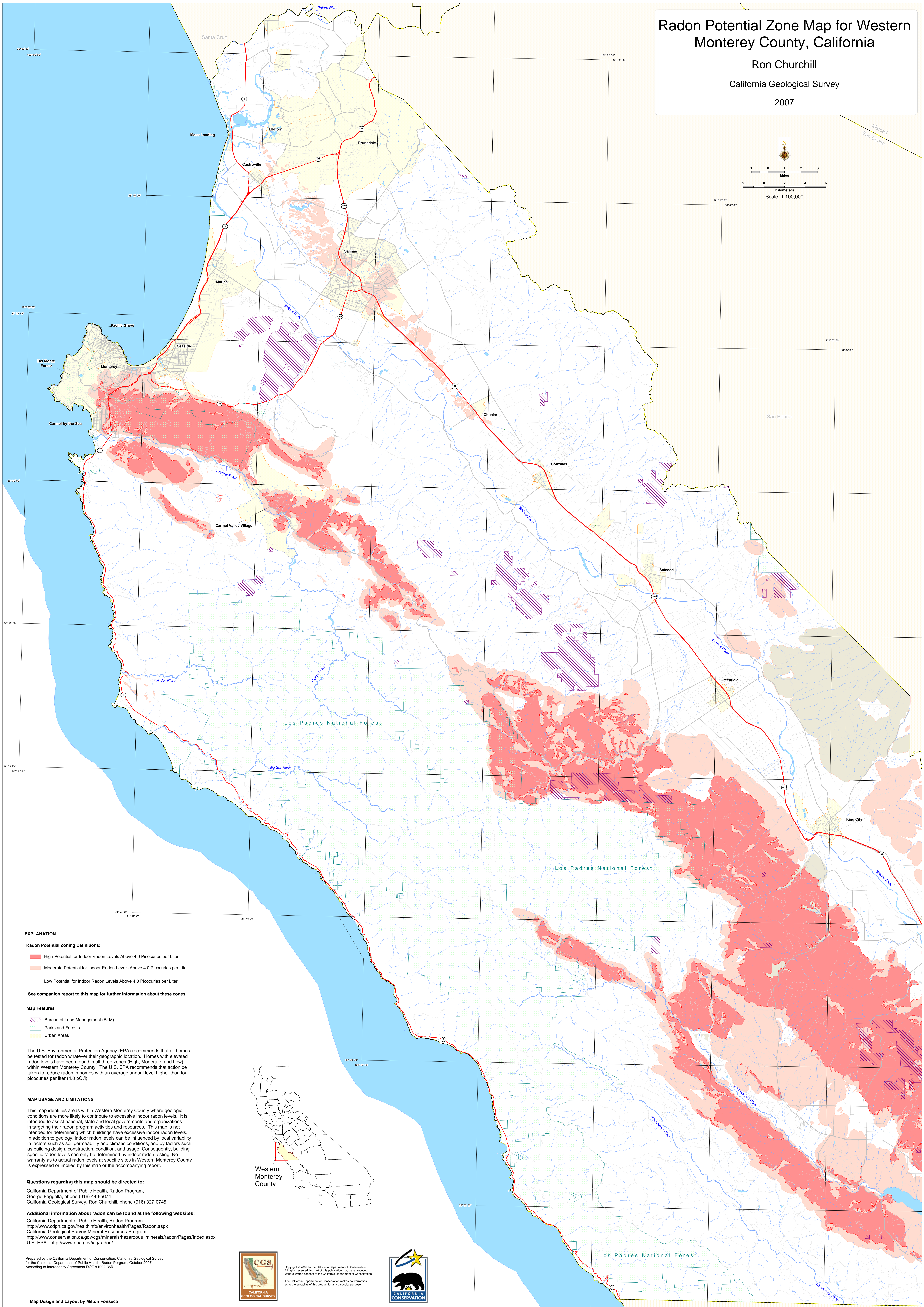
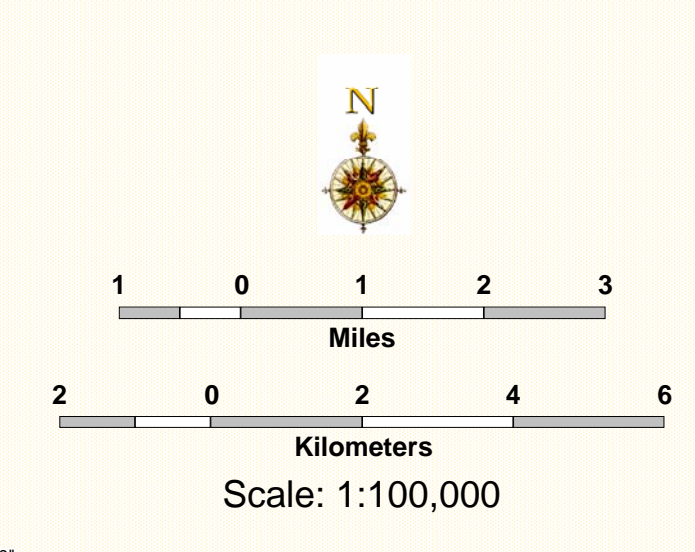


# Radon Potential Zone Map for Western Monterey County, California

Ron Churchill  
California Geological Survey  
2007



**EXPLANATION**

**Radon Potential Zoning Definitions:**

- High Potential for Indoor Radon Levels Above 4.0 Picocuries per Liter
- Moderate Potential for Indoor Radon Levels Above 4.0 Picocuries per Liter
- Low Potential for Indoor Radon Levels Above 4.0 Picocuries per Liter

See companion report to this map for further information about these zones.

**Map Features**

- Bureau of Land Management (BLM)
- Parks and Forests
- Urban Areas

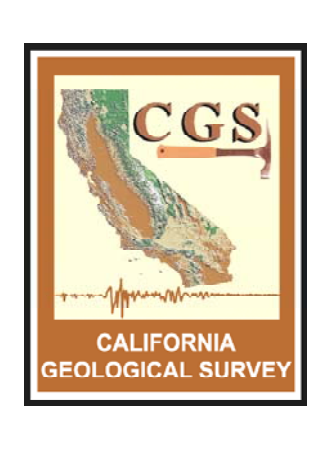
The U.S. Environmental Protection Agency (EPA) recommends that all homes be tested for radon whatever their geographic location. Homes with elevated radon levels have been found in all three zones (High, Moderate, and Low) within Western Monterey County. The U.S. EPA recommends that action be taken to reduce radon in homes with an average annual level higher than four picocuries per liter (4.0 pCi/l).

**MAP USAGE AND LIMITATIONS**

This map identifies areas within Western Monterey County where geologic conditions are more likely to contribute to excessive indoor radon levels. It is intended to assist national, state and local governments and organizations in targeting their radon program activities and resources. This map is not intended for determining which buildings have excessive indoor radon levels. In addition to geology, indoor radon levels can be influenced by local variability in factors such as soil permeability and climatic conditions, and by factors such as building design, construction, condition, and usage. Consequently, building-specific radon levels can only be determined by indoor radon testing. No warranty as to actual radon levels at specific sites in Western Monterey County is expressed or implied by this map or the accompanying report.

**Questions regarding this map should be directed to:**  
California Department of Public Health, Radon Program,  
George Faggella, phone (916) 449-5674  
California Geological Survey, Ron Churchill, phone (916) 327-0745

**Additional information about radon can be found at the following websites:**  
California Department of Public Health, Radon Program:  
<http://www.cdph.ca.gov/healthforevention/Pages/Radon.aspx>  
California Geological Survey-Mineral Resources Program:  
[http://www.conservation.ca.gov/cgs/minerals/hazardous\\_minerals/radon/Pages/Index.aspx](http://www.conservation.ca.gov/cgs/minerals/hazardous_minerals/radon/Pages/Index.aspx)  
U.S. EPA: <http://www.epa.gov/iaq/radon/>



Copyright © 2007 by the California Department of Conservation.  
All rights reserved. No part of this publication may be reproduced  
without written consent of the California Department of Conservation.  
The California Department of Conservation makes no warranties  
as to the suitability of this product for any particular purpose.

