

# Radon Potential Zone Map for Western Tulare County, California

By

Ronald K. Churchill, Ph.D  
(PG 4265)

2016

## LEGEND

### Radon Zone Definitions

- High Potential For Indoor Radon Levels
- Low Potential For Indoor Radon Levels Above Four Picocuries Per Liter\*
- Unknown Potential For Indoor Radon Levels Above Four Picocuries Per Liter\*

\* The U.S. Environmental Protection Agency (EPA) recommends

### Base Layers

- State Highway
- Secondary Road / Street
- River
- Creek
- Lake/ Reservoir

### MAP USAGE AND LIMITATIONS

This map identifies areas where geologic conditions are more likely to produce excessive indoor radon levels. The map is intended to be advisory only. It is intended to assist national, state and local governments and organizations in targeting their radon program activities and resources. This map is not intended for determining which buildings have excessive indoor radon levels. Because geology, local variability in such factors as soil permeability, weather and climatic conditions, building design and condition, and building usage also influence indoor radon levels. Consequently, building-specific radon levels can only be determined by indoor radon testing. No warranty as to actual radon levels at specific sites is expressed or implied by this map or the accompanying report.

The U.S. Environmental Protection Agency (EPA) recommends that all homes be tested for radon whatever their geographic location. Homes with elevated radon levels have been found in high and unknown zones within Tulare County, and will likely be found in low zone areas in the future. The U.S. EPA recommends that action be taken to reduce radon in homes with an average annual level higher than four picocuries per liter (4 pCi/L).

### Questions regarding this map should be directed to:

California Department of Public Health, Indoor Radon Program,  
Telephone: (916) 449-5674  
Email: [Natalia.Deardorff@cdph.ca.gov](mailto:Natalia.Deardorff@cdph.ca.gov)

California Geological Survey  
Telephone: (916) 323-7696  
Email: [rmhmp@consrv.ca.gov](mailto:rmhmp@consrv.ca.gov)

### Additional information about radon can be found at the following websites:

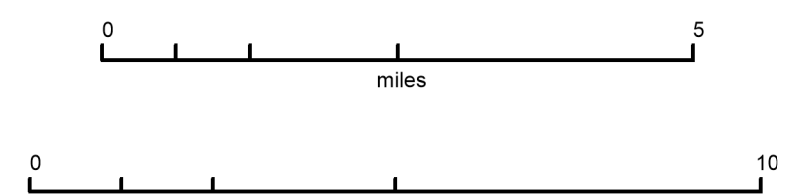
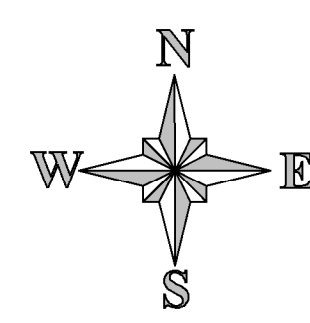
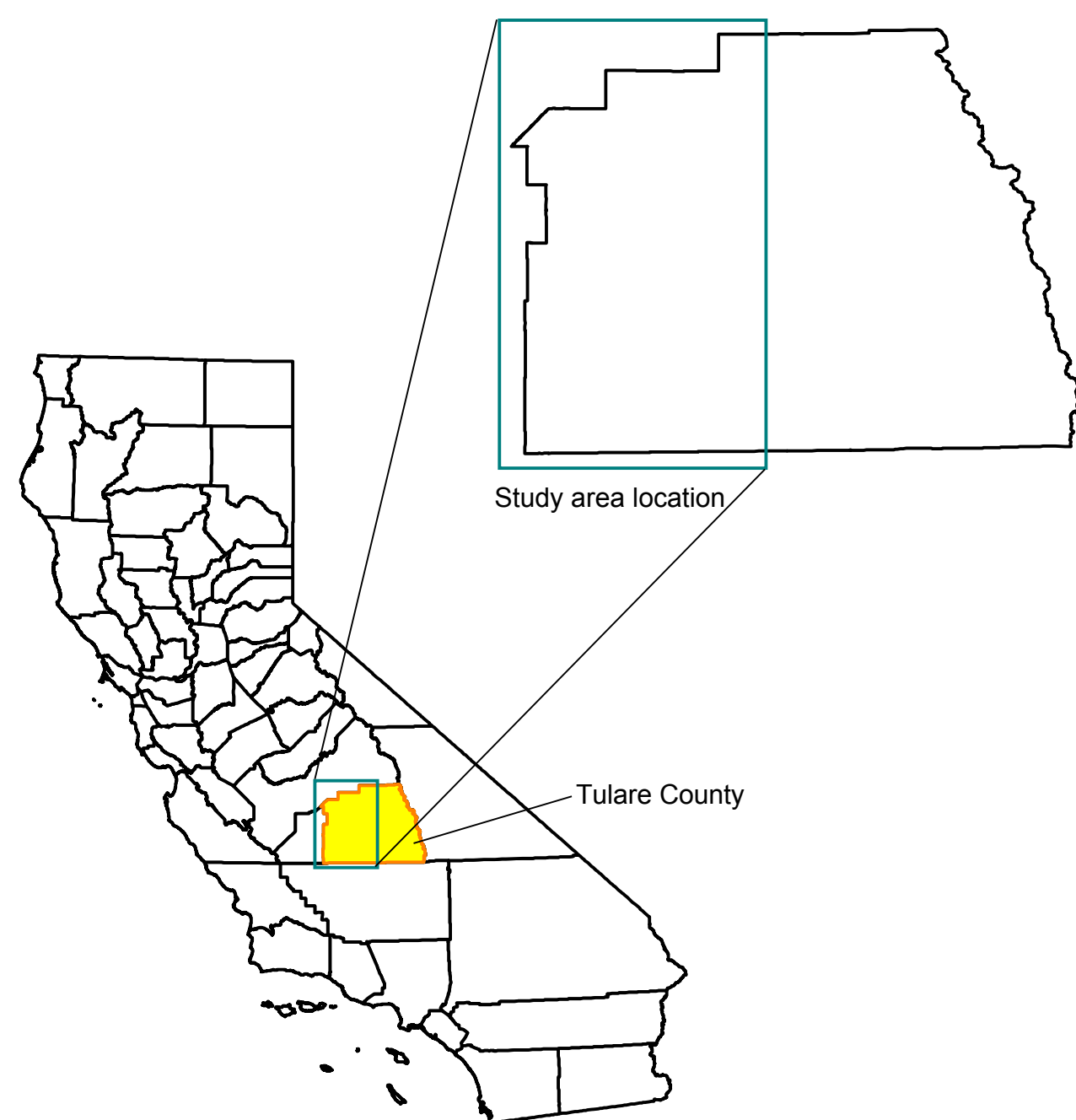
California Department of Public Health, Indoor Radon Program:  
<http://www.cdph.ca.gov/healthinfo/environmentalhealth/Pages/Radon.aspx>

California Geological Survey-Mineral Resources Program:  
[http://www.conservacion.ca.gov/og/minerals/hazardous\\_minerals/radon/Pages/Index.aspx](http://www.conservacion.ca.gov/og/minerals/hazardous_minerals/radon/Pages/Index.aspx)

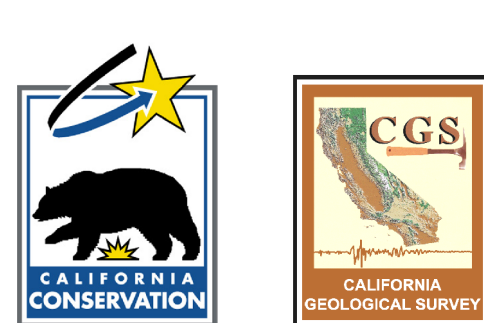
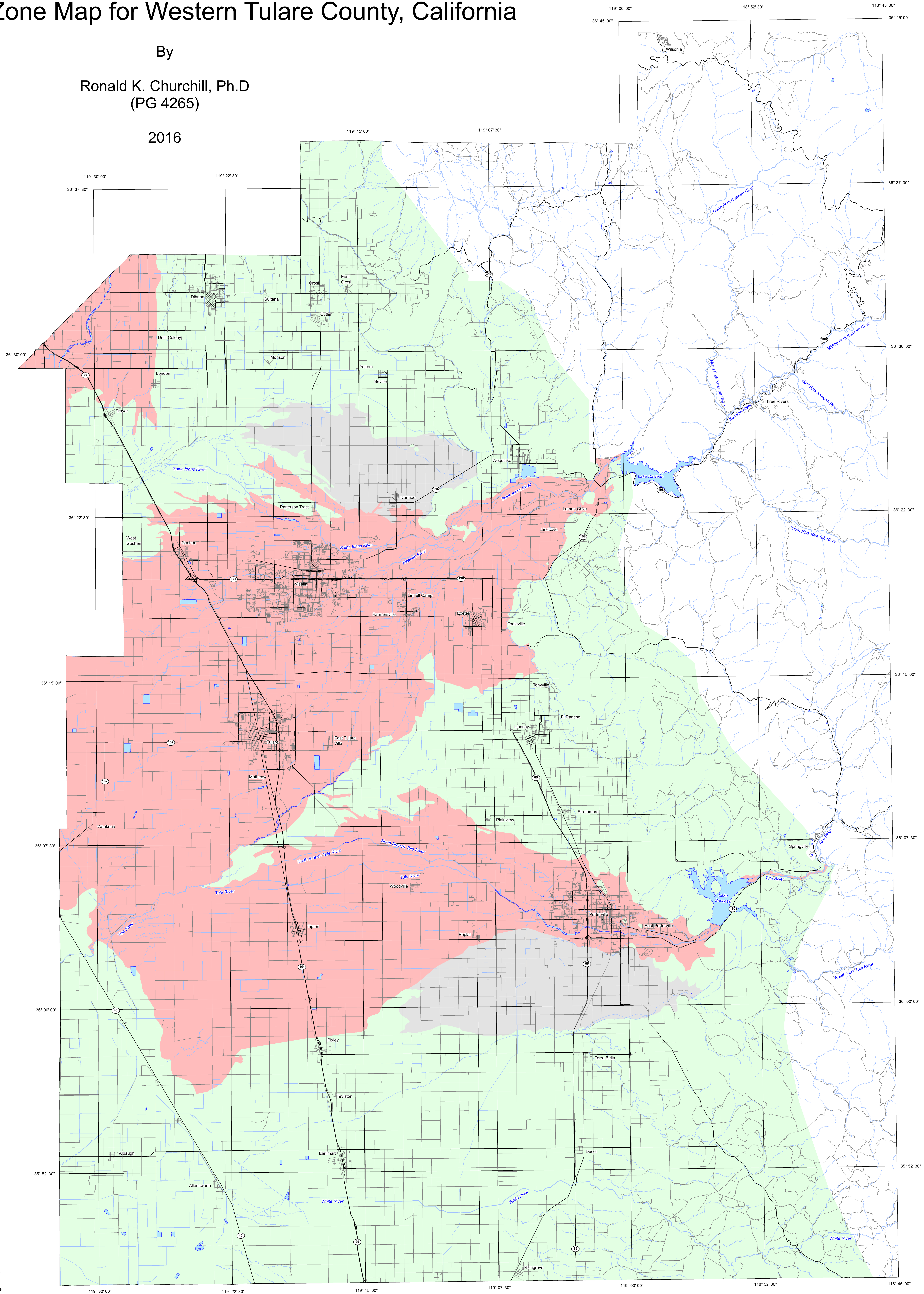
U.S. EPA: <http://www.epa.gov/iaq/radon/>

### Map Sources (Digital GIS Layers):

Hydrography: US Census Bureau, 2010  
Roads: US Census Bureau, 2010



Scale: 1:100,000  
Projection: Transverse Albers



Copyright © 2016 by the California Department of Conservation, California Geological Survey. All rights reserved. No part of this publication may be reproduced without written consent of the California Geological Survey.  
The California Department of Conservation makes no warranties as to the suitability of this product for any particular purpose.