

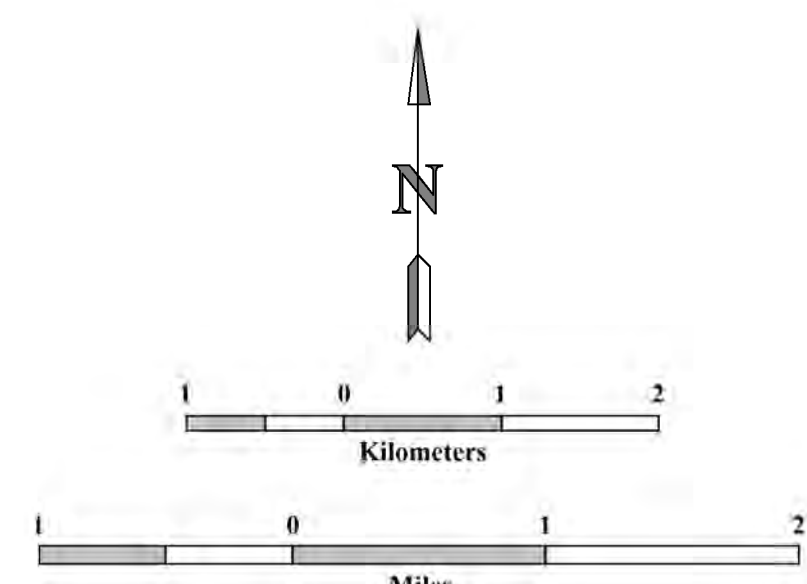
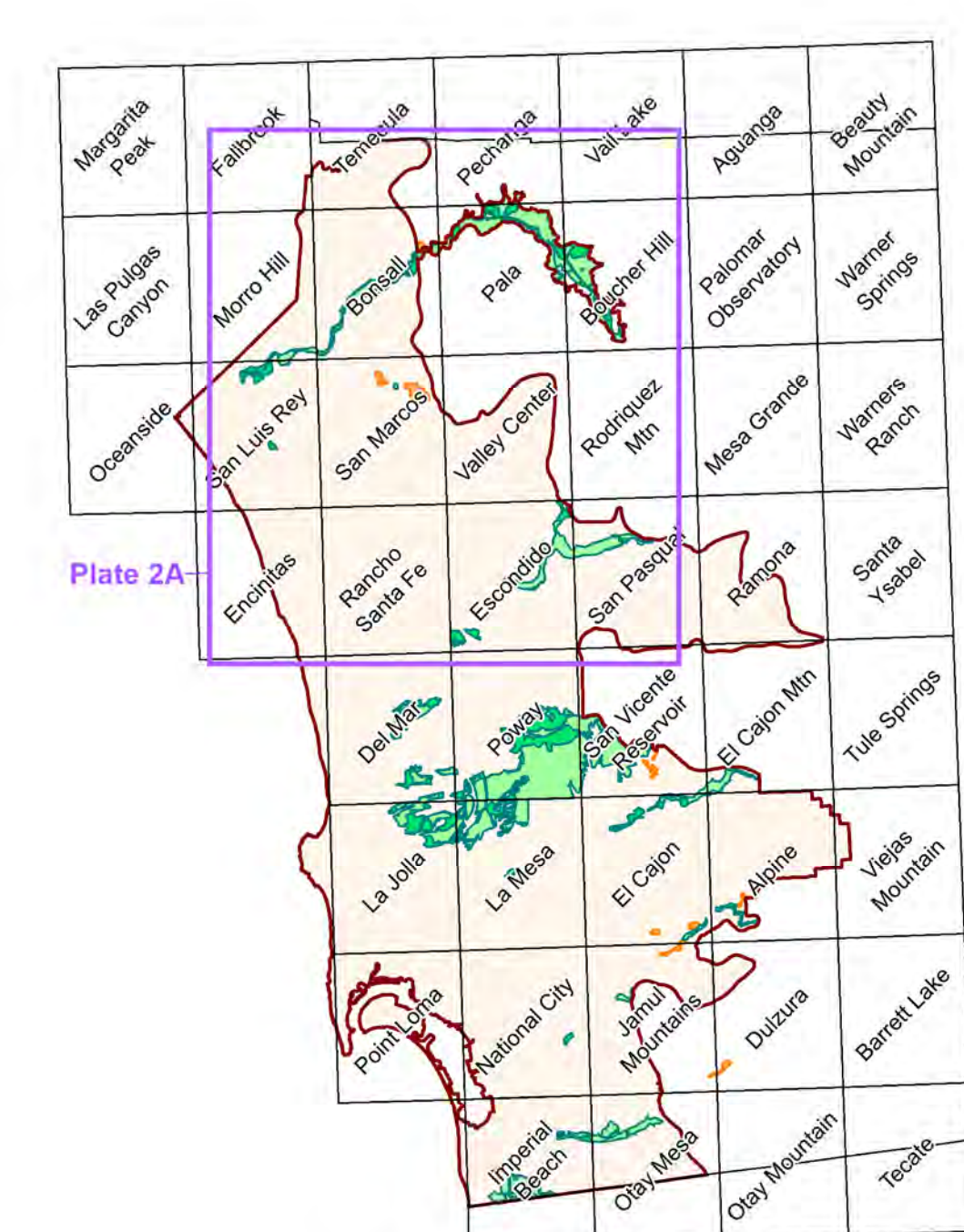
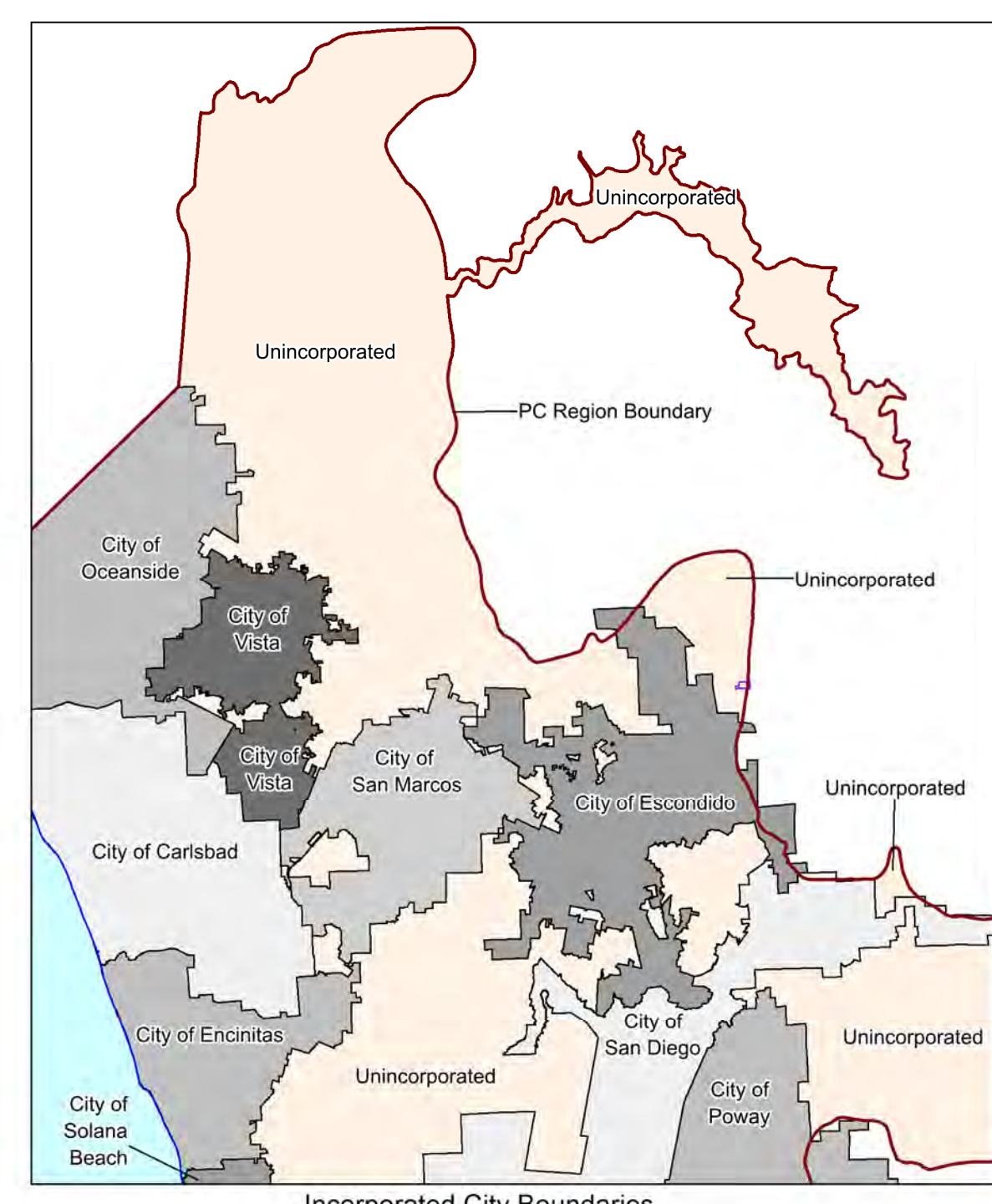
# California Geological Survey

## Updated Aggregate Resource Sector Map for Portland Cement Concrete-Grade Aggregate in the Western San Diego County Production-Consumption Region, California - Northern Part

By Lawrence L. Busch (PG 6440) and Russell V. Miller (PG 3331)

2017

- LEGEND**
- County Boundary
  - Western San Diego County Production-Consumption Region Boundary
  - Sector Boundary emphasized for clarity
  - Designated Sectors - Sectors designated by the State Mining and Geology Board (1985) as containing regionally significant Portland Cement Concrete-grade aggregate resources
  - Designated Sectors depleted by mining or lost to land uses incompatible with mining
  - New Sectors
  - Incorporated City Boundary
  - Reclamation Plan Boundary



Scale: 1:48,000  
Projection: Teale Albers  
Datum: NAD 83

Sources of Digital Base Layers:  
Municipal Boundaries - County of San Diego, Assessors Office  
Topographic Quadrangles - U.S.G.S.

California Geological Survey Web Site:  
<http://www.conservation.ca.gov/cgs>



Copyright © 2017 by the California Department of Conservation.  
All rights reserved. No part of this publication may be reproduced  
without written consent of the California Department of Conservation.  
The California Department of Conservation makes no warranties  
as to the suitability of this product for any particular purpose.

GIS Design and Map Layout by Milton Fonseca

