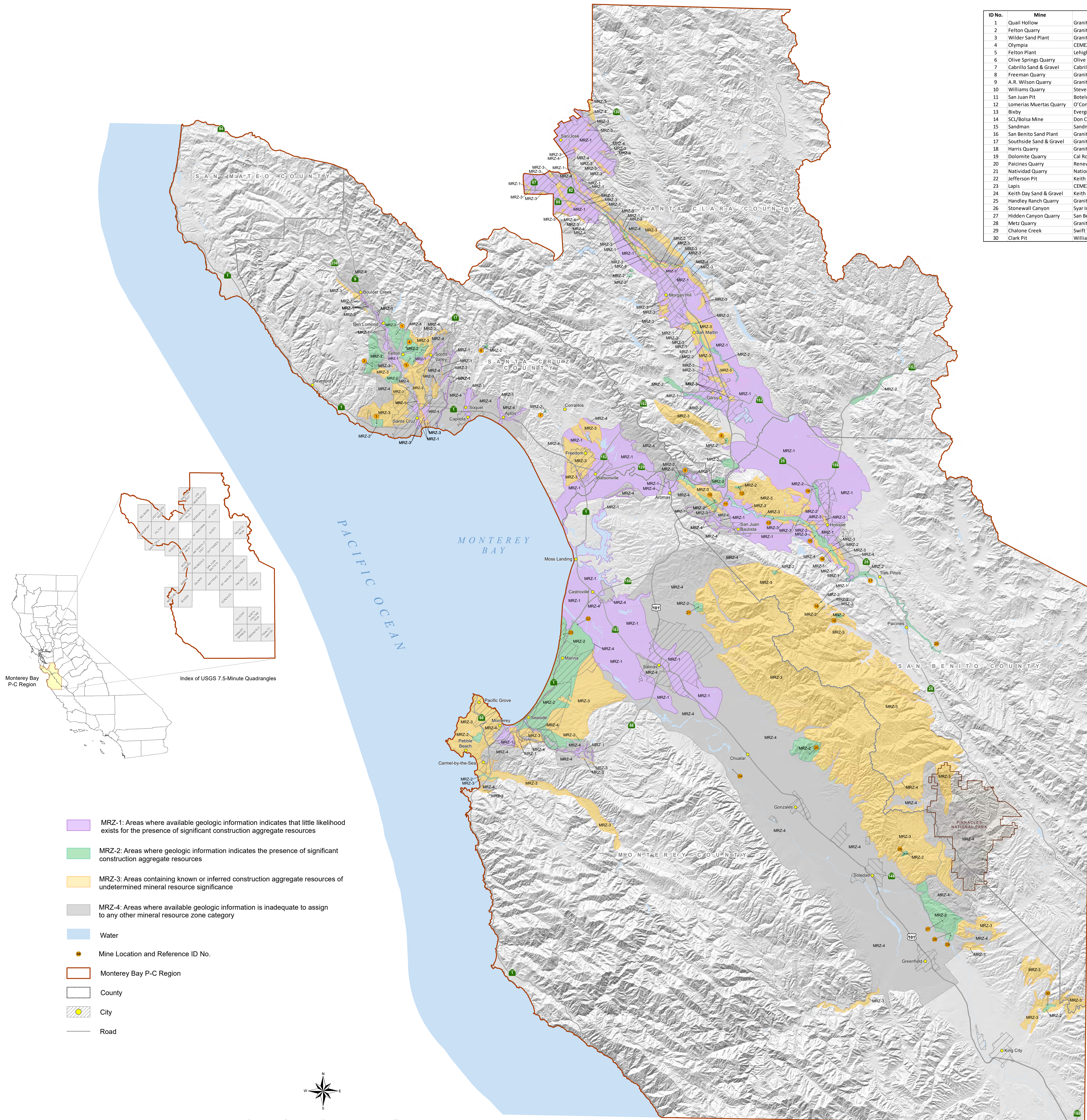


# California Geological Survey Mineral Resource Zone Map for Construction Aggregate in the Monterey Bay Production-Consumption Region

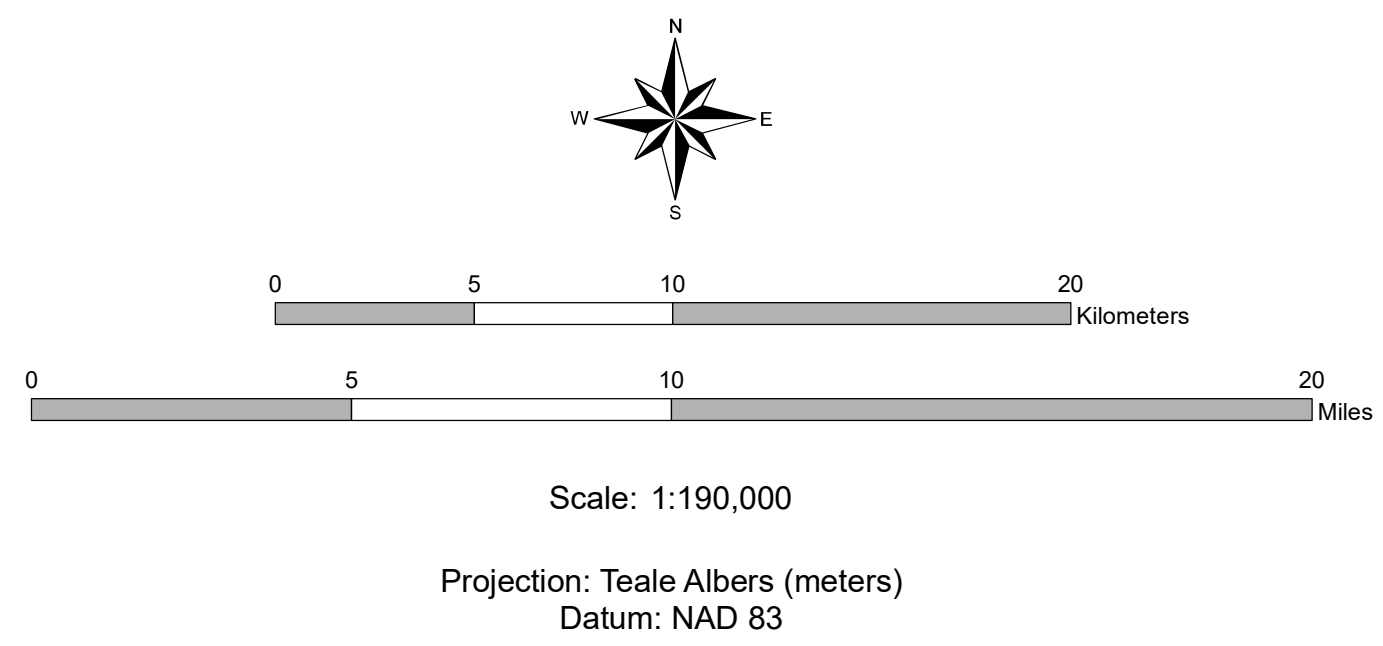
By Erica L. Key

2021

ID No.	Mine	Operator
1	Quail Hollow	Graniterock
2	Felton Quarry	Granite Construction
3	Wilder Sand Plant	Graniterock
4	Olympia	CEMEX
5	Felton Plant	Lehigh Hanson
6	Olive Springs Quarry	Olive Springs
7	Cabrillo Sand & Gravel	Cabrillo Sand & Gravel
8	Freeman Quarry	Granite Construction
9	A.R. Wilson Quarry	Graniterock Company
10	Williams Quarry	Stevens Creek Quarry Inc.
11	San Juan Pit	Bolote Family River Ranch LLC
12	Lomerias Muertas Quarry	O'Connell Ranch LLC
13	Bixby	Evergreen Supply
14	SCU/Bolsa Mine	Don Chapin Company
15	Sandman	Sandman Inc.
16	San Benito Sand Plant	Graniterock
17	Southside Sand & Gravel	Graniterock
18	Harris Quarry	Graniterock
19	Dolomite Quarry	Cal Rock Products LLC
20	Palacios Quarry	Renewable Resources LLC
21	Natividad Quarry	National Refractories
22	Jefferson Pit	Keith Day Sand & Gravel
23	Lapis	CEMEX
24	Keith Day Sand & Gravel	Keith Day Sand & Gravel
25	Handley Ranch Quarry	Granite Construction
26	Stonewall Canyon	Syar Industries
27	Hidden Canyon Quarry	San Benito Supply Inc.
28	Mitz Quarry	Granite Construction
29	Chalene Creek	Swift Technics Inc.
30	Clark Pit	William J. Clark Trucking Service



- MRZ-1: Areas where available geologic information indicates that little likelihood exists for the presence of significant construction aggregate resources
- MRZ-2: Areas where geologic information indicates the presence of significant construction aggregate resources
- MRZ-3: Areas containing known or inferred construction aggregate resources of undetermined mineral resource significance
- MRZ-4: Areas where available geologic information is inadequate to assign to any other mineral resource zone category
- Water
- Mine Location and Reference ID No.
- Monterey Bay P-C Region
- County
- City
- Road



Prepared in Compliance with the Surface Mining and Reclamation Act of 1975, Article 4, Section 2761

*Steven R. Bohlen*

Steven R. Bohlen, Ph.D.  
Acting State Geologist

**Web Accessibility Statement.** We could not make this map fully accessible with assistive technology. To request alternative means of access, please visit our Accessibility web page at <https://www.conservation.ca.gov>. To help us respond to your concern, please include in your request, the title of the map, the web address where you obtained it, and your contact information.



California  
**Department of Conservation**  
California Geological Survey

Copyright 2021 by the California Department of Conservation, California Geological Survey. All rights reserved. No part of this publication may be reproduced without written consent of the California Geological Survey.

The California Department of Conservation makes no warranties as to the suitability of this product for any particular purpose.

[www.conservation.ca.gov/cgs](http://www.conservation.ca.gov/cgs)

Base Map Sources: Hydrography: National Hydrography Dataset; U.S. Geological Survey; Roads: California Department of Transportation (CalTrans).

Professional Licenses and Certifications:  
Erica Key - P.G. 9620  
GIS Design and Map Layout by Janine Bird.