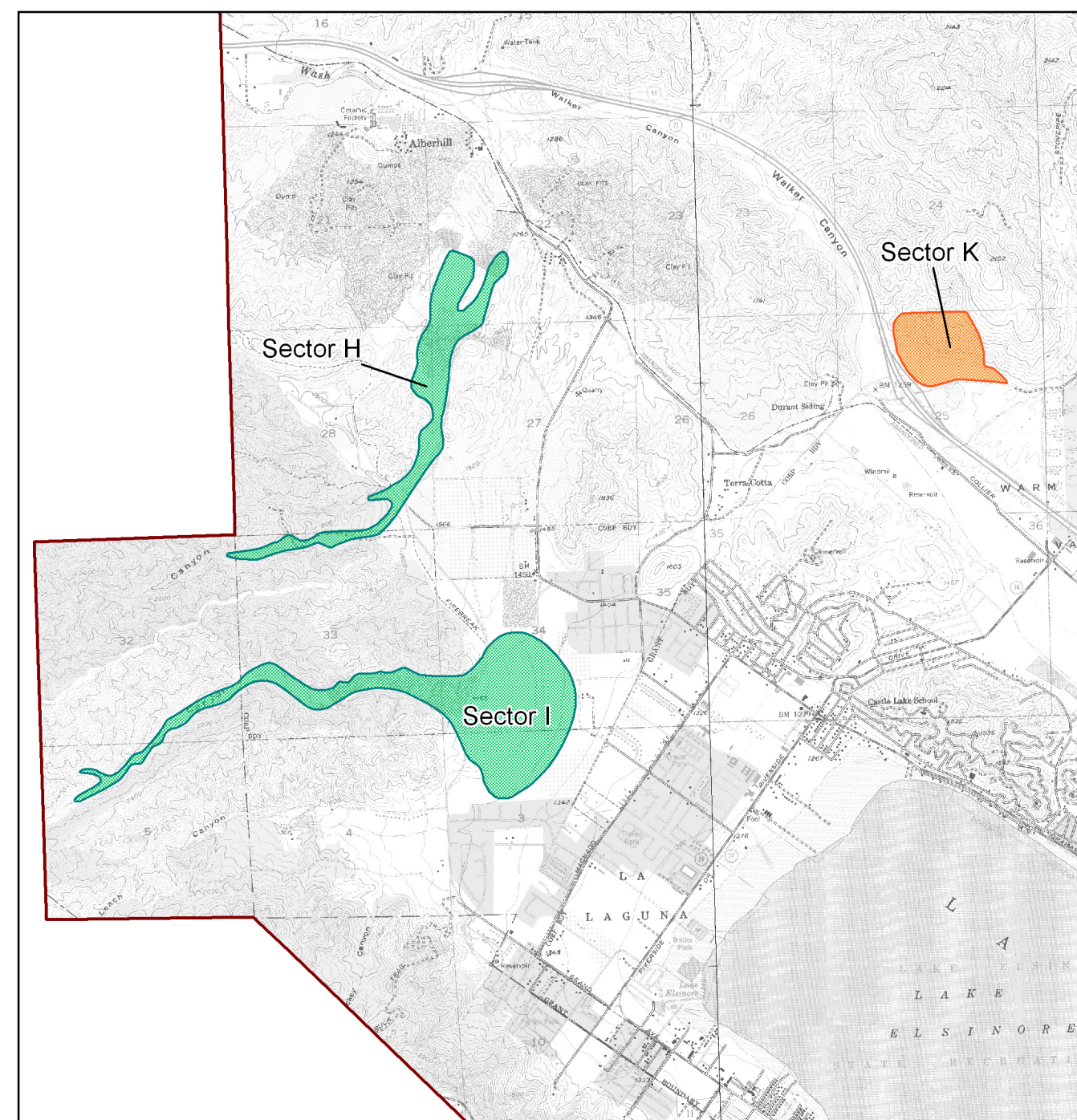


Candidate Areas for Updated Designation in the Southern San Bernardino Production-Consumption (P-C) Region, San Bernardino and Riverside Counties, California

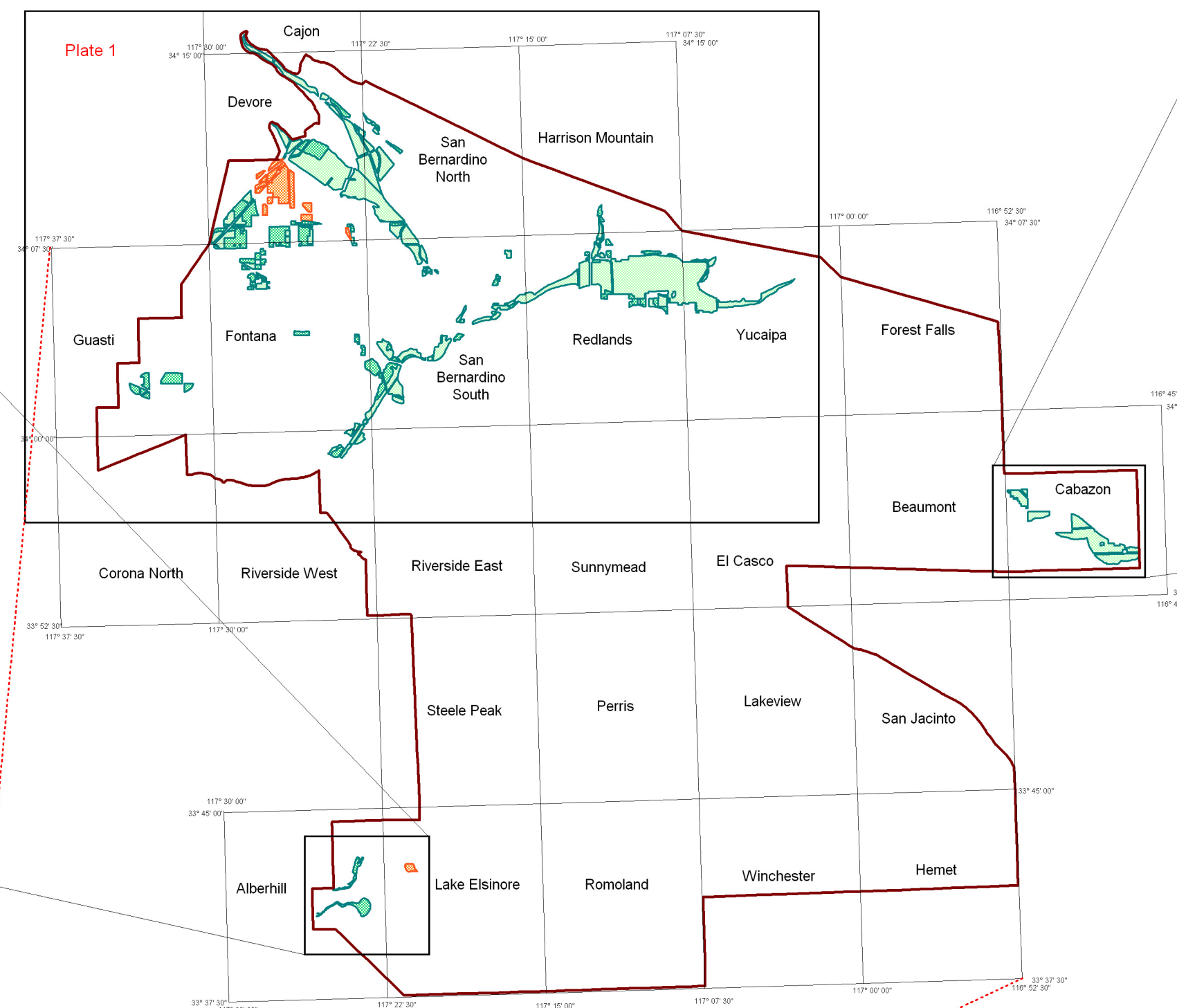
By

Russell V. Miller (PG #3331) and Lawrence L. Busch (PG #6440)

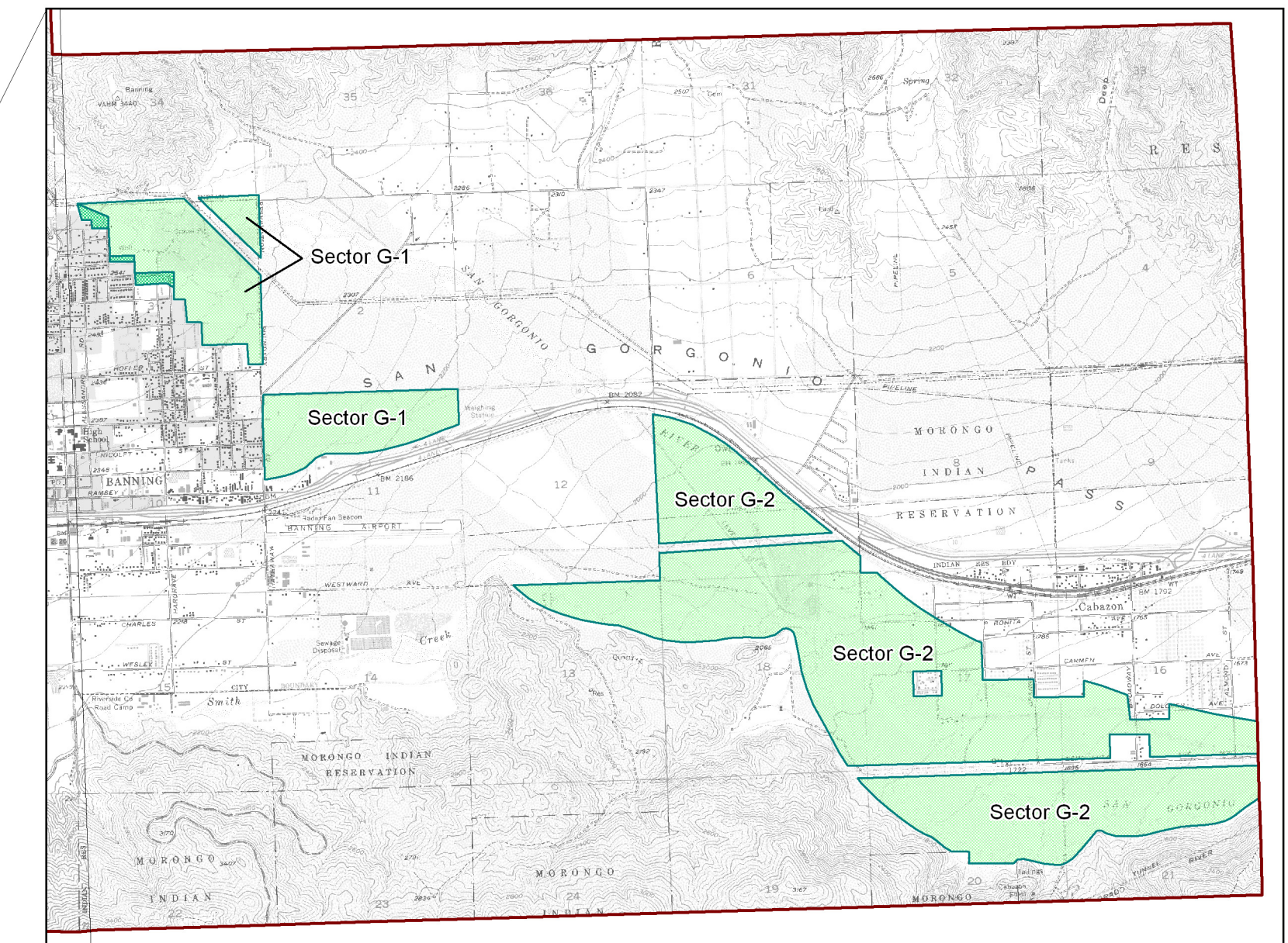
2010



Location of San Bernardino Production-Consumption Region Southwestern Sectors
(Scale 1:48,000)







Location of San Bernardino Production-Consumption Region and Index of USGS 7.5-Minute Topographic Quadrangles

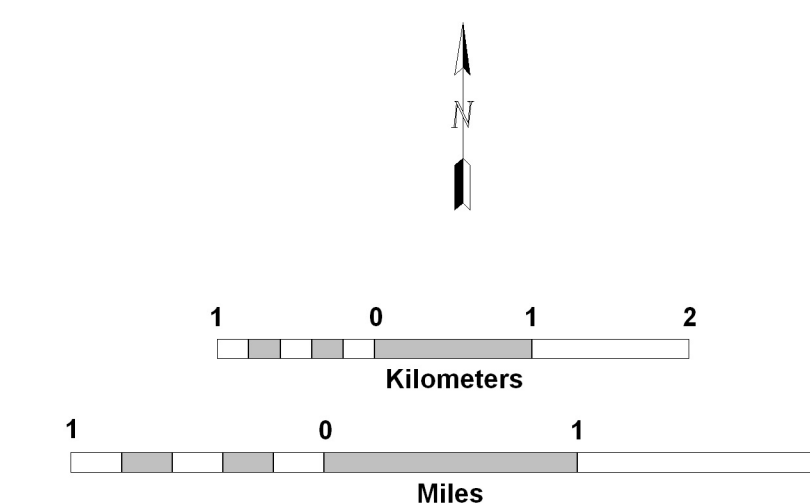


Location of San Bernardino Production-Consumption Region Eastern Sectors
(Scale 1:48,000)

LEGEND

-  Boundary of San Bernardino Production-Consumption Region.
-  Sectors designated by the State Mining and Geology Board (1987) as containing regionally significant PCC-grade aggregate resources.
-  Designated areas lost to land uses incompatible with mining since 1987.
-  New sectors.

Map Sources (Digital GIS Layers):
7.5-Minutes Topographic Quadrangles: U.S. Geological Survey



Scale: 1:48,000



Copyright © 2008 by the California Department of Conservation. All rights reserved. No part of this publication may be reproduced without written consent of the California Department of Conservation. The California Department of Conservation makes no warranties as to the suitability of this product for any particular purpose.