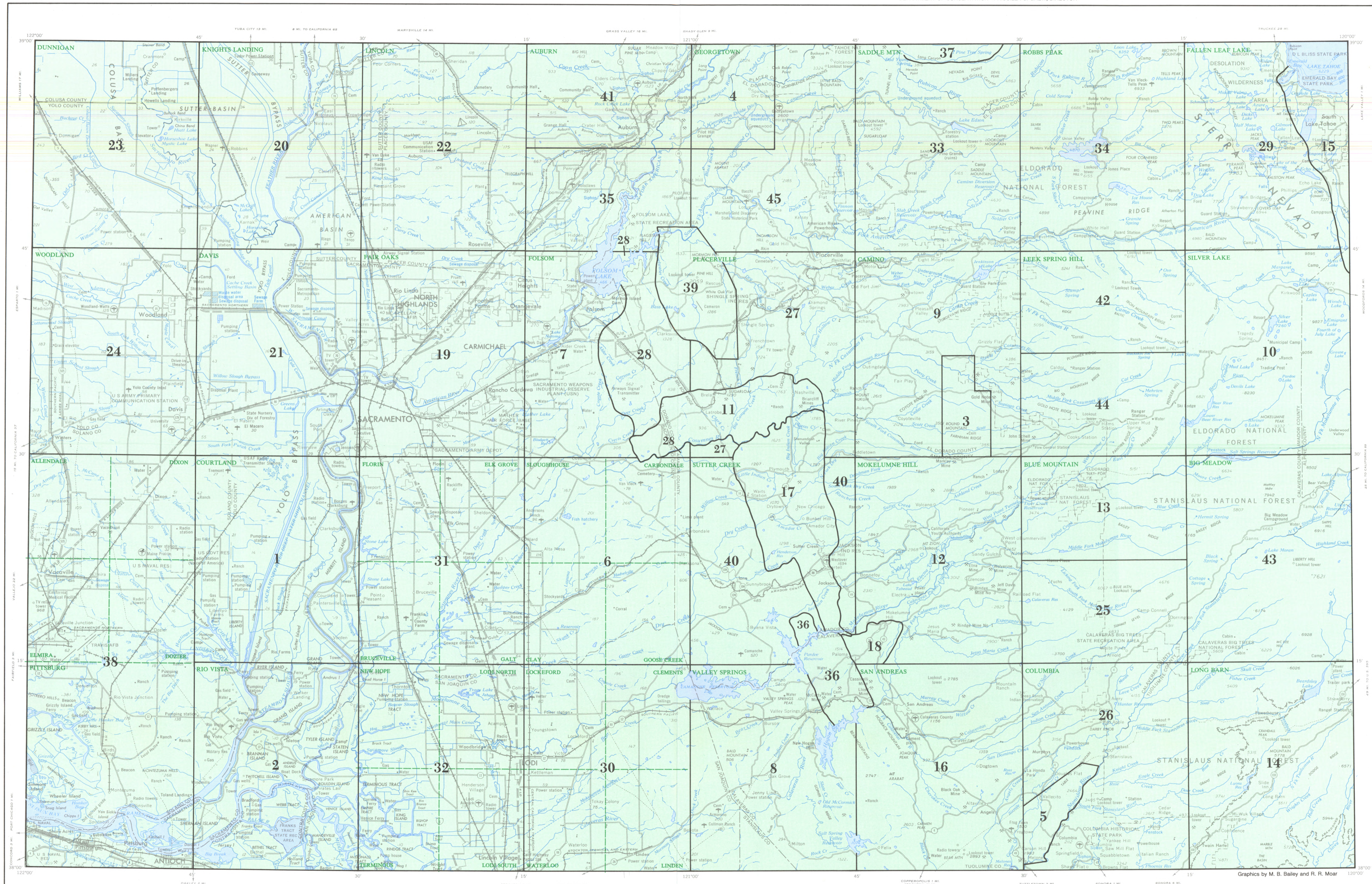


INDEX TO GEOL OF THE SACRAM

D. L. W



1. Atwater, B., 1979, Unpublished geologic maps of Quaternary deposits of the Saxon, Clarksburg, Liberty Island, and Courtland 7 1/2-minute quadrangles, scale 1:24,000. (Midland fault from Redwine, L.E., 1972, The Tertiary Princeton submarine valley system beneath the Sacramento Valley, California: University of California, Los Angeles, unpublished Ph.D. thesis, 479 p., Figure 17, scale 1" = 6.5 miles.)
2. Atwater, B., 1979, Generalized geologic map of the Rio Vista 15-minute quadrangle, California: U.S. Geological Survey Open File Report 79-853, scale 1:62,500. (Midland fault from Redwine, L.E., 1972, The Tertiary Princeton submarine valley system beneath the Sacramento Valley, California: University of California, Los Angeles, unpublished Ph.D. thesis, 479 p., Figure 17, scale 1" = 6.5 miles.)
3. Aune, Q.A., 1965, Geology of the Indian Diggings limestone deposit: California Division of Mines and Geology Open File Report, scale 1:62,500. (Eastern boundary of the Calaveras Complex from Schweickert, R.A., 1979, Lamont-Doherty Geological Observatory, Columbia University, written communication and unpublished maps.)
4. Aune, Q.A., 1979, Geologic reconnaissance of the Greenwood 7 1/2-minute quadrangle: unpublished field study for State Map Project, scale 1:24,000. In part after Turner, H.W., Lindgren, Waldemar, 1894, Geologic Atlas of the United States, Placerville Folio: U.S. Geological Survey Folio 3, scale 1:125,000. (Modifications by Wagner, D.L., 1979, California Division of Mines and Geology.)
5. Baird, A.K., 1962, Superposed deformations in the central Sierra Nevada foothills, east of the Mother Lode: University of California Publications in Geological Sciences, v. 42, no. 1, p. 1-70, Figure 2, scale 1:24,725. (Study of Baird's "Tertiary Graves" by Jennings, C.W., 1979, unpublished field study for State Map Project, scale 1:62,500.)
6. Bartow, J.A., and Marchand, D.E., 1979, Preliminary geologic map of Cenozoic deposits of the Clay area, California: U.S. Geological Survey Open File Report 79-667, scale 1:62,500. (Pre-Cenozoic bedrock from Clark, L.D., 1964, Stratigraphy and structure of part of the western Sierra Nevada metamorphic belt, California: U.S. Geological Survey Professional Paper 410, 70 p., Plate 1, scale 1:316,800.)
7. Bartow, J.A., and Helley, E.J., 1979, Preliminary geologic map of Cenozoic deposits of the Folsom area, California: U.S. Geological Survey Open File Report 79-550, scale 1:62,500. (Pre-Cenozoic bedrock from Lindgren, Waldemar, and Turner, H.W., 1894, Geologic Atlas of the United States, Placerville Folio: U.S. Geological Survey Folio 3, scale 1:125,000.)
8. Bartow, J.A., and Marchand, D.E., 1979, Preliminary geologic map of Cenozoic deposits of the Valley Springs quadrangle, California: U.S. Geological Survey Open File Report 79-436, scale 1:62,500. (Pre-Cenozoic bedrock from: a) Turner, H.W., 1894, Geologic Atlas of the United States, Jackson Folio 5, scale 1:125,000. b) Clark, L.D., 1964, Stratigraphy and structure of part of the western Sierra Nevada metamorphic belt, California: U.S. Geological Survey Professional Paper 410, 70 p., Plate 1, scale 1:316,800. c) Schweickert, R.A., 1979, Lamont-Doherty Geological Observatory, 1979, Stanislaus Nuclear Project Site Suitability-Site Safety Report (unsubmitted); Woodward-Clyde Consultants, Foothills Fault Study, v. 6, Appendix C-4, Figure C-4-2.)
9. Brossian, T.L., 1979, Geologic reconnaissance of the Camino 15-minute quadrangle: unpublished field study conducted for State Map Project, scale 1:62,500, geology modified from Lindgren, Waldemar, and Turner, H.W., 1894, Geologic Atlas of the United States, Placerville Folio: U.S. Geological Survey Folio 3, scale 1:125,000. Additional data from: a) U.S. Forest Service, 1972, Geomorphic land stratification maps of portions of the Omo Ranch and Sly Park 7 1/2-minute quadrangles, Eldorado National Forest, scale 1:20,000. b) Wheeler, G.A., 1977, Study of the Pleasant Valley planning area, Eldorado County, California: unpublished report, 34 p., Appendix E, geologic map, scale 1" = 16,400'. c) Schweickert, R.A., 1979, Lamont-Doherty Geological Observatory, Columbia University, written communication and maps (for location of eastern boundary of the Calaveras Complex).
10. Brossian, T.L., 1979, Geologic reconnaissance of the Silver Lake 15-minute quadrangle: unpublished field study for State Map Project, scale 1:62,500, geology modified from Lindgren, Waldemar, 1894, Geologic Atlas of the United States, Pyramid Peak Folio: U.S. Geological Survey Folio 31, scale 1:125,000. Additional data from: a) Beesly, D.J., 1970, Geology of the NW 1/4 of the Silver Lake quadrangle, Eldorado National Forest Progress Report, 37 p., scale 1:24,000. b) U.S. Forest Service, 1972, Geomorphic land stratification map of a portion of the Silver Lake 15-minute quadrangle, Eldorado National Forest, scale 1:20,000. (Aerial photo-analysis of lineaments and joints by Brossian, T.L., 1979, California Division of Mines and Geology, scale 1:62,500.)
11. Behrman, P.G., 1978, Paleogeography and structural evolution of a middle Mesozoic arc-continent margin, Sierra Nevada foothills, California: University of California, Berkeley, unpublished Ph.D. thesis, 301 p., scale 1:12,000.
12. Borguio, E.J., 1979, (with field assistance from G.J. Saucedo), Geologic reconnaissance of the Mokelumne Hill 15-minute quadrangle: unpublished field study for State Map Project, scale 1:62,500, geology modified from Turner, H.W., and Ransome, F.L., 1898, Geologic Atlas of the United States, Jackson Folio: U.S. Geological Survey Folio 11, scale 1:125,000. Eastern boundary of the Calaveras Complex from Schweickert, R.A., 1979, Lamont-Doherty Geological Observatory, Columbia University, written communication and maps.
13. Borguio, E.J., 1979, Geologic reconnaissance of the north half of the Blue Mountain 15-minute quadrangle: unpublished field study for State Map Project, scale 1:62,500, geology modified from Turner, H.W., and Ransome, F.L., 1898, Geologic Atlas of the United States, Big Trees Folio: U.S. Geological Survey Folio 51, scale 1:125,000.
14. Borguio, E.J., 1979, Geologic reconnaissance of the Long Barn 15-minute quadrangle: unpublished field study for State Map Project, scale 1:62,500, geology modified from Turner, H.W., and Ransome, F.L., 1898, Geologic Atlas of the United States, Big Trees Folio: U.S. Geological Survey Folio 51, scale 1:125,000.
15. Burnett, J.L., 1971, Geology of the Lake Tahoe basin: California Geology, v. 24, no. 7, p. 119-129, scale 1:125,000.

Graphics by M. B. Bailey and R. R. Moar