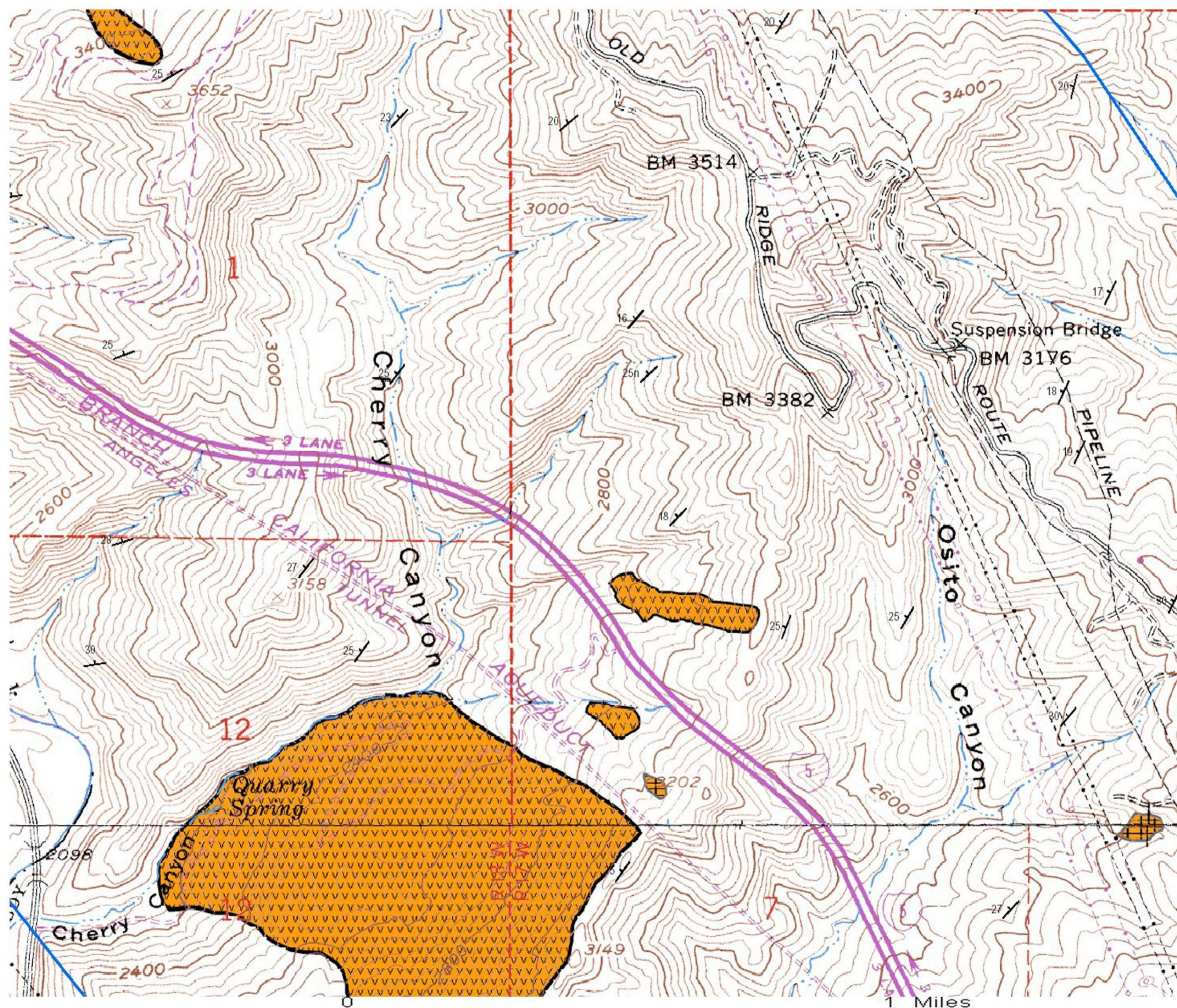
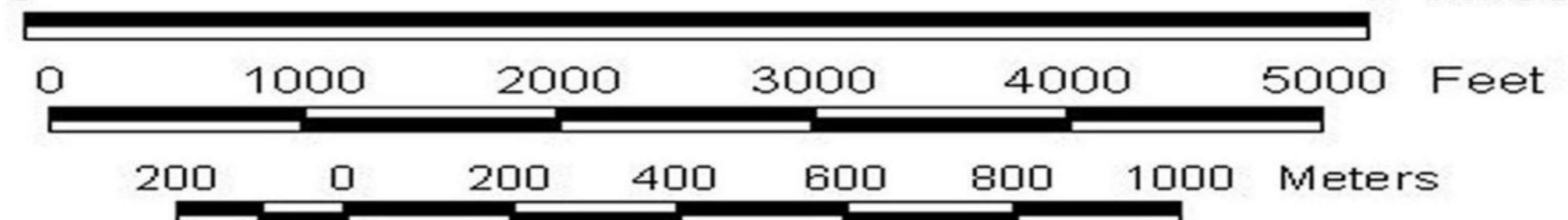


Landslide Map of the Highway 5 corridor Los Angeles County, California



topographic base map from USGS Whitaker Peak and Liebre Mtn quadrangles



LANDSLIDES IN THE INTERSTATE 5 CORRIDOR BETWEEN VALENCIA AND GORMAN, LOS ANGELES COUNTY, CALIFORNIA
 by B.D. Foster
 Plate 1, Map 9 of 14