



California
**Department of
Conservation**
Division of Land Resource
Protection

Williamson Act

Land Conservation Act of 1965

Navigating the DLRP & Williamson Act Website

February 2024

Monique Wilber

Farl Grundy

Annie Giovacchini

Division of Land Resource Protection

Williamson Act / CEQA

LCA@conservation.ca.gov

<https://www.conservation.ca.gov/dlrp/wa>



Land Conservation Act of 1965 “Williamson Act”

- Voluntary program/contracts
- Restricts land usage
- 10-20-year contracts
- Contract renew annually
- Contract runs with the land
- Local rules and regulations (GC 51231)



The DLRP & Williamson Act Website

Today's presentation will cover:

- DOC Website landing page
- Navigating to the DLRP (Division of Land Resource Protection) webpage, and mission statement
 - CEQA, LESA, CREEC, TerraCount
- Navigating to the WA (Williamson Act) webpage
 - Where to find what you're looking for!
- DOC Map Portal
 - WA Enrollment Finder (WA mapping)
 - FMMP (Farmland Mapping & Monitoring Program) – California Important Farmland Finder (CIFF)
- DLRP webpages
 - FMMP
 - Grant Programs
 - SALC, MBLR, CFCP, ALMP
 - RFFC, TCC
 - Watershed Coordinator Program
 - RCD (Resource Conservation District) Assistance
 - Working Lands & Riparian Corridors Program
 - Climate Smart Land Management Program

conservation.ca.gov



California
Department of Conservation



Information F



Division of Land Resource Protec

California has some of the most productive farmland and diverse open Resource Protection (DLRP) works with landowners, local government important natural resources.

Home | DLRP

Home

About DLRP

California Environmental Quality Act (Land Protection)

Conservation Districts

Farmland Mapping

Grant Programs

Williamson Act

Contact Us

Highlighted Content



Funding Opportunity Updates

Updates about grant and easement funding opportunities



Recent Reports and Publications

Access DLRP reports and publications



Project Profiles



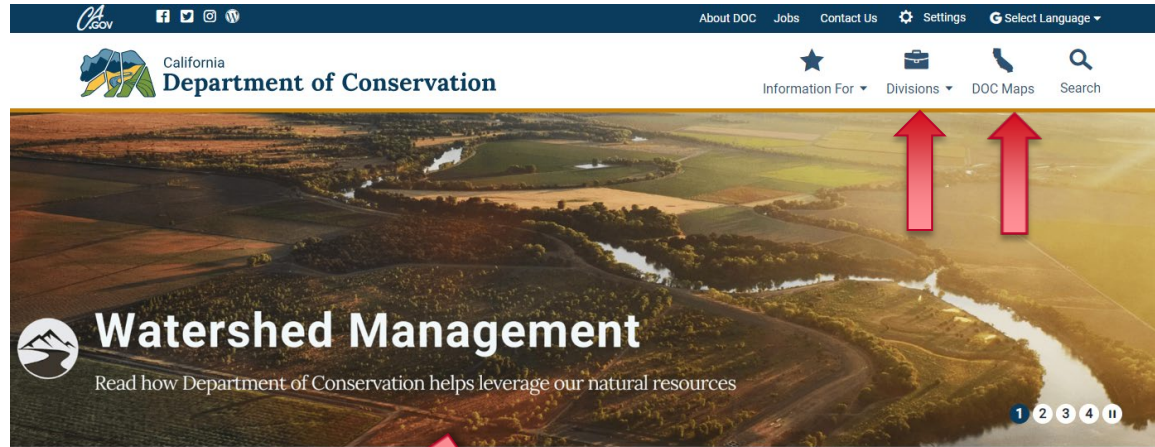
Program Outreach



DOC Website Landing Page



conservation.ca.gov



DOC Division topics include:

- Geology
- Land Resource Protection
- Mines
- Oil, Gas, & Thermal
- State Mining & Geology Board

Look at DOC Maps

Notice information is divided by interests, below the banner.

To visit Division of Land Resource Protection, where Williamson Act is, go to the Divisions drop down and choose Land Resource Protection.



DLRP Webpage

<https://www.conservation.ca.gov/dlrp/Pages/Index.aspx>



Department of Conservation

Information For ▾ Divisions ▾ DOC Maps Search



Division of Land Resource Protection

California has some of the most productive farmland and diverse open spaces in the world. The Division of Land Resource Protection (DLRP) works with landowners, local governments, and researchers to conserve these important natural resources.



Home | DLRP

- Home
- About DLRP
- California Environmental Quality Act (Land Protection)
- Conservation Districts
- Farmland Mapping
- Grant Programs
- Williamson Act

Highlighted Content



Funding Opportunity Updates
Updates about grant and easement funding opportunities



Recent Reports and Publications
Access DLRP reports and publications



Project Profiles
Recent successes achieved through program funding



Program Outreach
Outreach information and materials related to DLRP programs

Contact Us

715 P Street, Mail Stop #1904
Sacramento, CA 95814

- (916) 324-0850
- dlrp@conservation.ca.gov
- [DLRP Webmaster](#)

Popular Links

- Conservation Easements
General information about agricultural conservation easements
- Land Evaluation and Site Assessment (LESA) Model
A point-based approach for rating the relative importance of agricultural land resources
- TerraCount
GIS planning tool for cities, counties, districts, and other land use planners and decision-makers
- CREEC
Carbon in Riparian Ecosystems Estimator for California



Mission Statement

LESA Model

TerraCount Model

CREEC Model

CEQA

Main DLRP Contact

Williamson Act



WA Webpage

<https://www.conservation.ca.gov/dlrp/wa>



Williamson Act Open Office Hours 2024



Join the Division of Land Resource Protection (DLRP) Williamson Act team for hour-long virtual sessions providing technical assistance on all things Williamson Act.

- JAN. 11** WA Monitoring & Material Breach
- FEB. 8** Navigating the DLRP & WA Website
- MAR. 14** Non-Renewals Discussion
- APR. 11** LAFCOs, Annexations, & WA
- MAY 9** WA Overview
- JUN. 13** Open Hour, Bring a Question / Hear a Question
- JUL.** - no meeting scheduled -
- AUG. 8** What's the Difference? Ag Preserves, WA, & FSZs
- SEP. 12** WA & Compatible Use
- OCT. 10** Open Hour, Bring a Question / Hear a Question
- NOV.** - no meeting scheduled -
- DEC.** - no meeting scheduled -

Contact
LCA@conservation.ca.gov
conservation.ca.gov/dlrp/wa



Home | DLRP | Williamson Act

- Home
- About DLRP
- California Environmental Quality Act (Land Protection)
- Conservation Districts
- Farmland Mapping
- Grant Programs
- Williamson Act**
 - Program Overview
 - Laws and Policy
 - Contracts
 - Removing Contracts
 - Open Space Subventions
 - Reports and Statistics

Williamson Act Program



Williamson Act Open Office Hours

The Department of Conservation's Williamson Act Program hosts open office hours on the second Thursday of each month. The Division of Land Resource Protection's (DLRP) Williamson Act team will offer technical assistance on all things Williamson Act. These hour-long virtual sessions will cover a different topic each month followed by open Q&A. Our next open office hours will be 11 a.m.-noon February 8, 2024, focused on navigating the DLRP & Williamson Act websites. Further details coming soon.

[2024 Monthly WA Open Office Hours Topics \(PDF\)](#)





WA Webpage

In the department's continuing effort to migrate to a paperless environment, all Williamson Act questions and/or environmental documents for review can be emailed to the Department at LCA@conservation.ca.gov.



<https://www.conservation.ca.gov/dlrp/wa>

Contact LCA@conservation.ca.gov to be added to the mailing list for more information.

Recent Williamson Act Open Office Hours Presentations:

In order to view the presenter notes on the following pdf's they should be downloaded and viewed on your local device, as they do not work properly when viewed through an internet browser.

- October 2022: [Williamson Act & CEQA Overview \(PDF\)](#)
- November 2022: [Williamson Act Enrollment Reporting \(PDF\)](#)
- January 2023: [Senate Bill 574 & Associated Williamson Act Changes \(PDF\)](#)
- February 2023: [Solar Use Easements \(PDF\)](#)
- March 2023: [Williamson Act Cancellation Process \(PDF\)](#)
- April 2023: [Williamson Act Lot Line Adjustment and Subdivision \(PDF\)](#)
- May 2023: [Williamson Act Easement Exchange Basics \(PDF\)](#)
- June 2023: [CEQA Williamson Act & Farmland Mitigation \(PDF\)](#)
- July 2023: No meeting scheduled
- August 2023: [Public Acquisition Process August 2023 \(PDF\)](#)
- September 2023: [Solar Use & WA Contracts \(PDF\)](#)
- October 2023: [Williamson Act Enrollment Finder App \(PDF\)](#)
- November 2023: Bring a Question, Hear a Question
- December 2023: No meeting scheduled
- January 2024: [Williamson Act Monitoring & Material Breach Process \(PDF\)](#)
- February 2024: Navigating the DLRP & Williamson Act website



About the Williamson Act

The Williamson Act, also known as the California Land Conservation Act of 1965, enables local governments to enter into contracts with private landowners for the purpose of restricting specific parcels of land to agricultural or related open space use. In return, landowners receive property tax assessments which are much lower than normal because they are based upon farming and open space uses as opposed to full market value.

The Department of Conservation assists all levels of government, and landowners in the interpretation of the Williamson Act related government code. The Department also researches, publishes and disseminates information regarding the policies, purposes, procedures, and administration of the Williamson Act according to government code. Participating counties and cities are required to establish their own rules and regulations regarding implementation of the Act within their jurisdiction. These rules include but are not limited to: enrollment guidelines, acreage minimums, enforcement procedures, allowable uses, and compatible uses.

Contact Us





- Home
- About DLRP ▶
- California Environmental Quality Act (Land Protection)
- Conservation Districts ▶
- Farmland Mapping ▶
- Grant Programs ▶
- Williamson Act** ▼
 - Program Overview
 - Laws and Policy
 - Contracts
 - Removing Contracts
 - Open Space Subventions
 - Reports and Statistics

Program Overview: History, Objectives, Program Structure & Administration

Laws & Policy: Legislation, Statutes & Regulations, Policy, General Williamson Act Information

Contracts: Agricultural Preserves, Williamson Act Contracts, Farmland Security Zone Contracts

Removing Contracts: Nonrenewal, Cancellation, Easement Exchange, Solar-Use Easement, Public Acquisition of Contracted Land, Material Breach, A City’s Refusal of Succession of a Williamson Act Contract (LAFCO info)

Open Space Subventions: Open Space Subvention Payments

Reports & Statistics: Data & Maps, CA Williamson Act Enrollment Finder, Biennial Williamson Act Status Reports



The Department of Conservation provides services and information that promote environmental health, economic vitality, informed land-use decisions, and sound management of our state's natural resources. As home to the California Geological Survey, the Geologic Energy Management Division, Division of Land Resource Protection, and Division of Mine Reclamation, spatial data informs virtually every aspect of the Department's activities.

The California Department of Conservation (DOC) is a prolific producer of spatial data and manages much of the data using Geographic Information Systems (GIS).

GIS and Greenhouse Gas Calculation Tools


TerraCount ←

A GIS-based scenario planning tool for cities, counties, and regions wanting to model the greenhouse gas and natural resource implications of development patterns and management practices on working landscapes. TerraCount includes calculations of co-benefits to agriculture, water quality, biodiversity, and human wellbeing. Merced County served as the pilot project conducted in close collaboration between the Department of Conservation, The Nature Conservancy, and the County of Merced. [Learn More About TerraCount](#)

CREEC ←


Carbon in Riparian Ecosystems Estimator for California (CREEC)
A California specific carbon estimation tool for riparian conservation and restoration. The tool is based on the largest and most comprehensive data set on riparian carbon available for the State of California. [Learn More About CREEC](#)

Subject Areas




Land Use Planning

A collection of data and maps specifically intended for land use planning and related interests.



Agriculture ←

This collection of data and maps provides resources for agriculture and agricultural land conservation.



Geothermal Resources

Maps and data about California's geothermal resources.

Quick Access

- **Popular Resources:** Frequently used datasets and interactive maps
- **Subject Areas:** Curated data collections
- **Interactive Web Maps:** Subject specific web maps
- **Data Viewer:** Pick the data to explore
- **Divisions** in the Department of Conservation
- **Searchable Data List:** Find Data
- **Data Disclaimer:** General Disclaimer

Popular Resources

| Name | Description | Link |
|-------------------------------|------------------------------------------------------------------------------------------------------|---------------------------------------------------------------------------------------------|
| Important Farmland (aka FMMP) | See how California's agricultural landscape has changed over time in the Important Farmland dataset. | Interactive Map Download Map Services |
| CalGEM Well Finder | Look up oil & gas well status and related data in an easy to use web map. | Well Finder (Interactive Map) |
| CGS Regulatory Maps | Find seismic and surface fault rupture hazard zoning maps for California | Regulatory Maps (Interactive Map) |

The California Department of Conservation provides data and services to support the preservation of agricultural land in agricultural uses.

DOC Map Portal

<https://maps.conservation.ca.gov/>



Show 10 entries

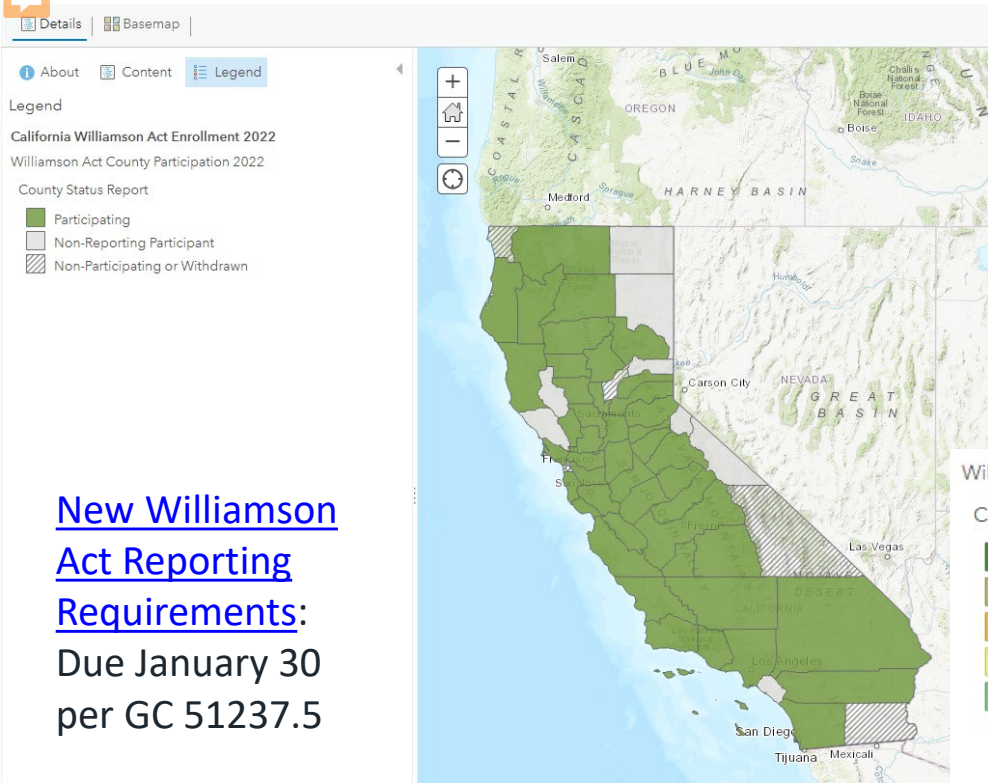
Search:

| Title | Division | Description | Metadata | Access | Updated |
|--------------------------------|----------|-----------------------------------------------------------------------------------------------------------------------------------------------------------------------------------------------------------------------------------------------------------------------------------------------------------------------------------------------------------------------------------------------------------------------------------------------------------------------------------------------------------------------------------------------------------------------------------------------------------------------------------------------------------------------|----------|-------------------------------------------------------|------------|
| Important Farmland | DLRP | The Farmland Mapping and Monitoring Program (FMMP) provides data to decision makers for use in planning for the present and future use of California's agricultural land resources. The data is a current inventory of agricultural resources. This data is for general planning purposes and has a minimum mapping unit of ten acres. | Metadata | Download | 2018-11-01 |
| Important Farmland | DLRP | The Farmland Mapping and Monitoring Program (FMMP) provides data to decision makers for use in planning for the present and future use of California's agricultural land resources. The data is a current inventory of agricultural resources. This data is for general planning purposes and has a minimum mapping unit of ten acres. | Metadata | Map Service | 2018-11-01 |
| Important Farmland Finder | DLRP | This web map provides the ability to calculate the amount of classified Important Farmland in a geographic area. | Metadata | Web Map | 2018-11-01 |
| Important Farmland Time Series | DLRP | This web map provides a time series of Important Farmland data from 1984 through the present. | Metadata | Web Map | 2017-07-06 |
| Williamson Act 2021 | DLRP | The California Land Conservation Act of 1965 - commonly referred to as the Williamson Act is the State's primary program for the conservation of private land in agricultural and open space use. The Williamson Act is a voluntary, locally administered program that offers preferential property taxes on lands which have enforceable restrictions on their use via contracts between individual landowners and local governments. This dataset depicts Williamson Act enrollment within the participating jurisdiction. Data is supplied by the participating jurisdiction and represents their most current submitted data for the year reflected in the title. | Metadata | File Geodatabase Map Service Web Map Web App | 2022-07-08 |
| Williamson Act 2022 | DLRP | The California Land Conservation Act of 1965 - commonly referred to as the Williamson Act is the State's primary program for the conservation of private land in agricultural and open space use. The Williamson Act is a voluntary, locally administered program that offers preferential property taxes on lands which have enforceable restrictions on their use via contracts between individual landowners and local governments. This dataset depicts Williamson Act enrollment within the participating jurisdiction. Data is supplied by the participating jurisdiction and represents their most current submitted data for the year reflected in the title. | Metadata | File Geodatabase Map Service Web Map Web App | 2023-04-07 |



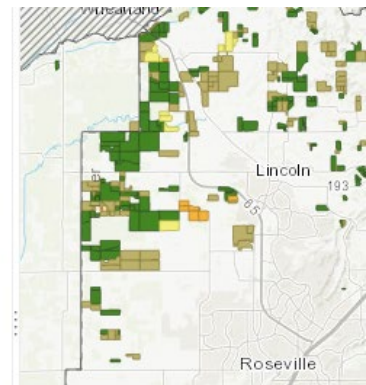
DOC Map Portal

<https://maps.conservation.ca.gov/>



[New Williamson Act Reporting Requirements:](#)
 Due January 30
 per GC 51237.5

- ✓ Shows County Status Report for year
 - ✓ Participating (green)
 - ✓ Non-Reporting Participant (grey)
 - ✓ Non-Participating or Withdrawn (diagonal hatch)



DOC Map Portal

<https://maps.conservation.ca.gov/>



FMMP Webpages



<https://www.conservation.ca.gov/dlrp/fmmp>

Home | DLRP | Farmland Mapping and Monitoring Program

- Home
- About DLRP
- California Environmental Quality Act (Land Protection)
- Conservation Districts
- Farmland Mapping**
- Program Overview
- Laws and Policy
- Map Categories, Criteria, and Products
- Search for Maps, Reports, and Data
- Continuous Improvements
- Long-Term Trends
- Grant Programs
- Williamson Act

Farmland



Documenting

The Department of Conservation has an automated map of numbered calendar year Prime Farmland. It is converted to or from

The Department shares classification of agricultural counties as required

Farmland Mapping & Monitoring Program: Map Changes, Removing Ag Land Protocol, Important Farmland Map Categories, Search for Maps, Reports, and Statistics, California Important Farmland Finder, Important Farmland Time Series, Map and Feature Services, GIS Geodatabases and Shapefiles, California Farmland Conversion Reports, Farmland Real Estate Disclosure Legislation

Program Overview: History, Other Info & Resources

Laws & Policy: Statutory Summary

Map Categories, Criteria, and Products: Map Products, Copyright and Usage Restrictions, Other Info & Resources

Search for Maps, Reports, and Data: Available Information

Continuous Improvements: Survey Area Additions, Improved County Boundary Data

Long Term Trends: Statistical Summaries, Maps and Graphics

FMMP is legislatively mandated to update maps of its survey area, now approximately 50 million acres in size, every two years.



Grant Programs



Grant Programs

Agricultural Land Mitigation Program

California Farmland Conservancy Program

Climate Smart Land Management Program

Multibenefit Land Repurposing

RCD Financial Assistance

Regional Forest and Fire Capacity Program

Sustainable Agricultural Lands Conservation Program

Transformative Climate Communities Program

Watershed Coordinator Program

Working Lands and Riparian Corridors Program



<https://www.conservation.ca.gov/dlrp/grant-programs>



THANK YOU

Questions?

Williamson Act/CEQA Team

LCA@conservation.ca.gov

<https://www.conservation.ca.gov/dlrp/wa>